



CCS Cross Country Invitational Norman, OK

DATE: SATURDAY, SEPTEMBER 9, 2017

LOCATION: Community Christian School Activity Center
5300 N Interstate Dr, Norman, Ok 73072

- o Just south of Indian Hills Rd. (Exit 114) and I-35 in Norman.
- o Cross Country Course just to the south of CCS Baseball Field (see map below).

ENTRY FEE: \$75/High School team - \$150 if your school has both girls and boys teams.
\$50/Junior High School team - \$100 if your school has both girls and boys.
Maximum Entry Fee for all divisions \$250
\$10 per individuals.
Open race: \$25 – comes with t-shirt, coffee mug, and medal.

Make check payable to Cody Weaver and mail to:

Cody Weaver
Community Christian School
3002 Broce Dr.
Norman, OK 73072

- You can bring check to the meet.

SCHEDULE:	*TIME	RACE	DISTANCE
	7:00	OPEN RACE (ALL AGES)	5K
	8:00	COACHES' MEETING	
	8:15	JH GIRLS (6-8TH GRADE)	1.5 MILES
	8:40	JH BOYS (6-8TH GRADE)	2 MILES
	9:10	2A, 3A & 4A VARSITY GIRLS	2 MILES
	9:40	5A & 6A VARSITY GIRLS (UNLIMITED)	5K
	10:10	2A, 3A, 4A, 5A, & 6A VARSITY BOYS**	5K
	10:40	2A, 3A & 4A JV GIRLS (UNLIMITED)	2 MILES
	11:10	2A, 3A, & 4A JV BOYS (UNLIMITED)	5K
	11:40	5A & 6A JV BOYS (UNLIMITED)	5K

*All races after first race will be run on a rolling schedule (i.e., events will be run one after the other as soon as the last runner finishes, regardless of time).

**Results will be divided into Small School (2A, 3A, & 4A) and Large School (5A-6A).
Races will be divided if too large.

AWARDS: Medals to the top 20 in each race and a trophy to the winning boy & girl in Varsity HS and JH divisions. Team Champion plaques will be awarded in Varsity HS and JH divisions.
Medals for all runners in the open race.

CONCESSION:

There will be a concession stand available and t-shirts for sale.

PARKING:

Bus and car parking in paved CCS Activity Center parking lot north of baseball field (see map below). \$5 parking fee per car.

ENTRY PROCEDURE:

All teams must email only the names of the *varsity* runners that will be running (7 runners maximum), and please distinguish if boys or girls division. *Names of junior varsity and junior high runners are not needed for this meet.* JV and JH races will still be timed and given place cards and medals, and the junior races will be scored. The deadline is Wednesday, September 7, and names must be emailed to Tim Thompson at okrunneredmond@att.net. Any school showing up on day of race without registering in advance will be charged an additional \$25 for each team. Any teams that are interested in participating in the meet should email entries to Tim Thompson as soon as possible as Small and Large School fields will be limited to 15 teams each for safety purposes.

CHECK IN:

Each Team will receive a packet with bibs for each runner and detailed course maps (map below is a preliminary sketch) at baseball concession stand. The bib must be worn on the front (chest area). Students will not be allowed to start/enter a race without his/her bib.

ENTRY DUE DATES:

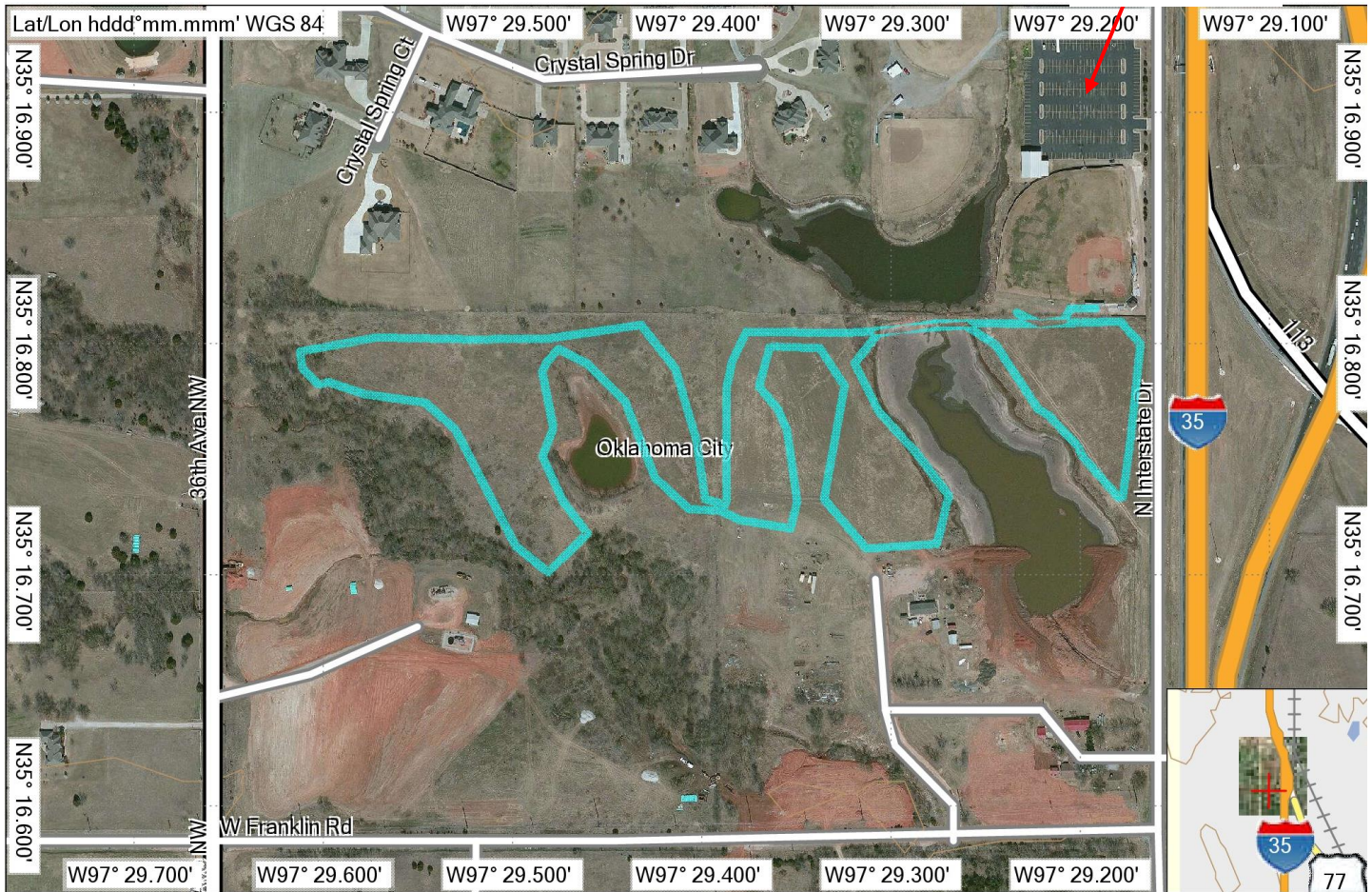
ENTRIES DUE 11:59 PM ON WEDNESDAY, SEPTEMBER 6 to Tim Thompson at okrunneredmond@att.net.

MORE INFO?

CONTACT:

Cody Weaver – weaver_cody@hotmail.com - (405) 371-0243

Parking



TOPO U.S. 100K v5.01
 © Courtesy of National Oceanic and Atmospheric Administration / National Ocean Service 2013
 © Garmin Ltd. and Its Subsidiaries 2013
 © Navteq 2010. All rights reserved.
 © Navteq All rights reserved. 2008

7/28/2017



GARMIN

TN MN
 4.5°
 1/1/2010