



Second Annual CCS Cross Country Invitational Norman, OK

DATE: SATURDAY, SEPTEMBER 29, 2018

LOCATION: Community Christian School Activity Center
5300 N Interstate Dr, Norman, Ok 73072

- Just south of Indian Hills Rd. (Exit 114) and I-35 in Norman.
- Cross Country Course just to the south of CCS Baseball Field (see map below).

ENTRY FEE: \$75/High School team - \$150 if your school has both girls and boys teams.
\$50/Junior High School team - \$100 if your school has both girls and boys.
Maximum Entry Fee for all divisions \$250
\$10 per individuals.
Open race: \$25 – comes with t-shirt.
Fields will be limited to 20 Small Schools (2A-4A) and 20 Large Schools (5A-6A).**

Make check payable to CCS and mail to:

Cody Weaver
Community Christian School
3002 Broce Dr.
Norman, OK 73072

- You can bring check to the meet.

| SCHEDULE: | TIME* | RACE | DISTANCE |
|------------------|--------------|---|-----------------|
| | 7:00 | OPEN RACE (ALL AGES) – Coaches race for free! | 5K |
| | 8:00 | COACHES' MEETING | --- |
| | 8:15 | JH GIRLS (6-8TH GRADE) | 1.5 MILES |
| | 8:40 | JH BOYS (6-8TH GRADE) | 2 MILES |
| | 9:10 | SMALL SCHOOL VARSITY GIRLS | 2 MILES |
| | 9:40 | LARGE SCHOOL VARSITY GIRLS | 5K |
| | 10:10 | Varsity Boys** | 5K |
| | 10:40 | SMALL SCHOOL JV GIRLS (UNLIMITED) | 2 MILES |
| | 11:10 | LARGE SCHOOL JV GIRLS (UNLIMITED) | 5K |
| | 11:50 | JV BOYS (UNLIMITED)** | 5K |

**All races after first race will be run on a rolling schedule (i.e., events will be run one after the other as soon as the last runner finishes, regardless of time).*

***Results will be divided into Small School (2A, 3A, & 4A) and Large School (5A-6A). If entries exceed course capacity, HS races will be divided into Small School (2A, 3A, & 4A) and Large School (5A-6A). If this occurs then a revised schedule will be posted on Enduro.*

AWARDS: Medals to the top 20 in each race and a trophy to the winning boy & girl in Varsity HS and JH divisions. Team Champion plaques will be awarded in Varsity HS and JH divisions.

CONCESSION: There will be a concession stand available and t-shirts for sale.

PARKING: Bus and car parking in paved CCS Activity Center parking lot north of baseball field (see map below).

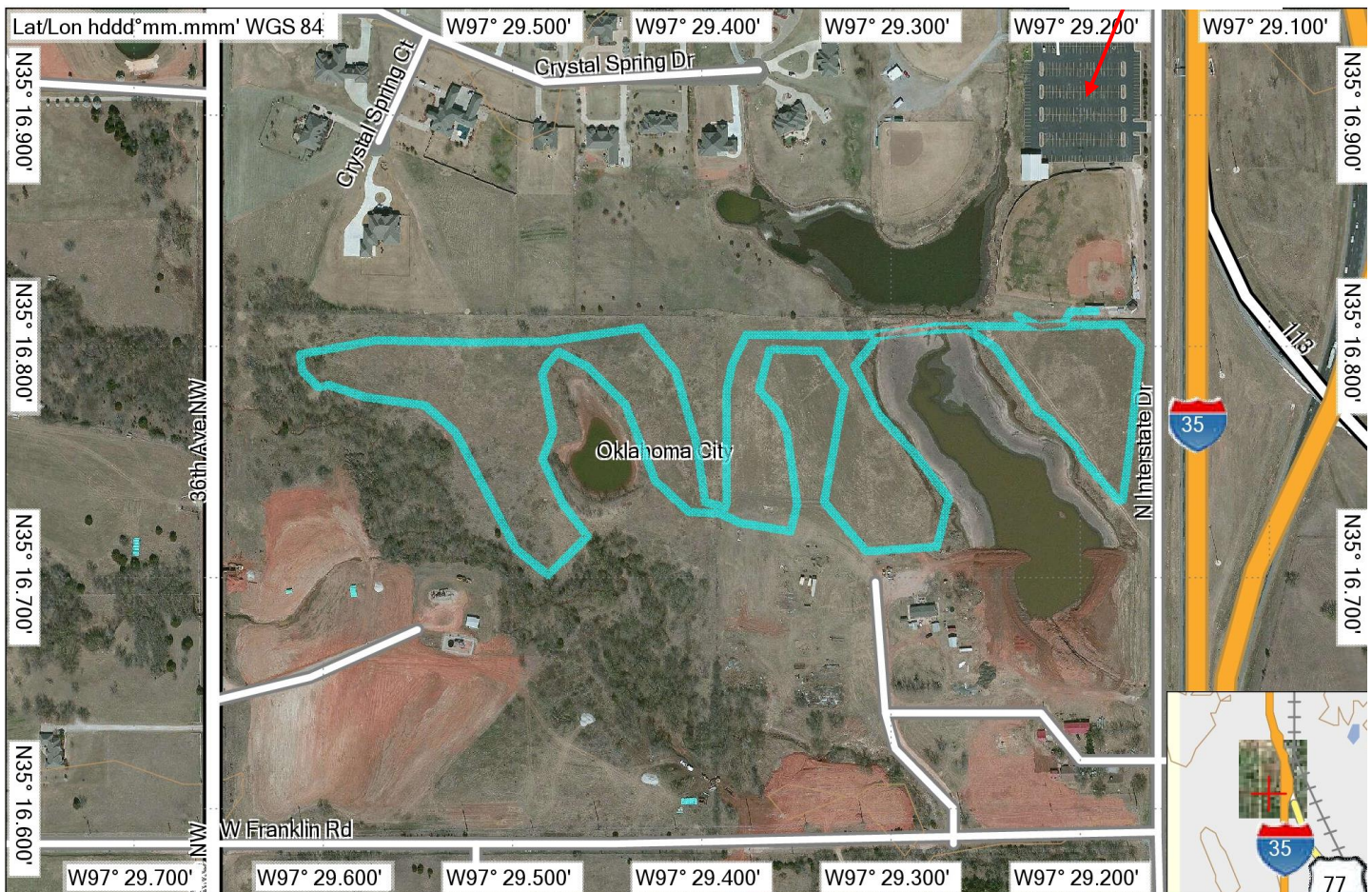
ENTRY PROCEDURE: All entries will be done on-line at: www.endurousa.com
Teams and students must be entered on-line before the deadline through your ENDURO USA account. Teams will not be added at the meet. Each Team will receive a packet with bibs for each runner. The bib must be worn on the front (chest area). Students will not be allowed to start/enter a race without his/her bib. Junior High Students can NOT be entered through a High School Account. If you need assistance with your ENDURO USA account, contact Kevin McWatters at the following email address: kevin@runenduro.com

CHECK IN: Bring a copy of the printed from EUDURO USA Entries, to check in as a receipt of entry in exchange for team/coaches' packet and bib numbers.

ENTRY DUE DATES: **ENTRIES DUE ON ENDURO BY 5PM ON THURSDAY, SEPTEMBER 27**

CONTACT: Cody Weaver – weaver_cody@hotmail.com - (405) 371-0243

Parking



TOPO U.S. 100K v5.01
© Courtesy of National Oceanic and Atmospheric Administration / National Ocean Service 2013
© Garmin Ltd. and Its Subsidiaries 2013
© Navteq 2010. All rights reserved
© Navteq All rights reserved. 2008

7/28/2017

GARMIN.

TN MN
4.5°
1/1/2010