



OKLAHOMA BAPTIST UNIVERSITY
HIGH SCHOOL / JR HIGH INVITATIONAL
Shawnee, Ok

DATE : Saturday, September 14, 2019

LOCATION: Gordon Cooper Technology Center
1 John C Bruton Dr, Shawnee, OK 74804
Site of the 2019 OSSAA 2A,3A,4A Cross Country State Championships

ENTRY FEE: \$75/High School team - \$150 if your school has both genders.
\$50/Junior High School team - \$100 if your school has both genders.
Maximum Entry Fee for all divisions \$250
\$10 per individuals.

Make check payable to **Oklahoma Baptist University** and mail to:
Ford Mastin
OBU Box 61209 **You can bring check to the meet.**
Shawnee, OK 74804

SCHEDULE

8:30AM JR HIGH GIRLS, 2400m
8:45AM JR HIGH BOYS, 3200m
9:05AM 2A, 3A & 4A HIGH SCHOOL GIRLS, 3200m
9:25AM 5A & 6A GIRLS, UNLIMITED ENTRIES, 5000m
9:55AM 2A, 3A & 4A JV GIRLS, 3200m
10:15AM JV BOYS, 5000m
10:45AM 2A, 3A & 4A HIGH SCHOOL BOYS, 5000m
11:10AM 5A & 6A HIGH SCHOOL BOYS, 5000m

AWARDS Medals to the top 20. Team Champion plaques will be awarded in each division.

CONCESSION There will be a concession stand available.

CONTACT Ford Mastin - ford.mastin@okbu.edu, (405) 878-2133
Matt Kennedy - matt.kennedy@okbu.edu, (405) 585-5321
Mark Heard - mark.heard@okbu.edu, (405) 585-5322

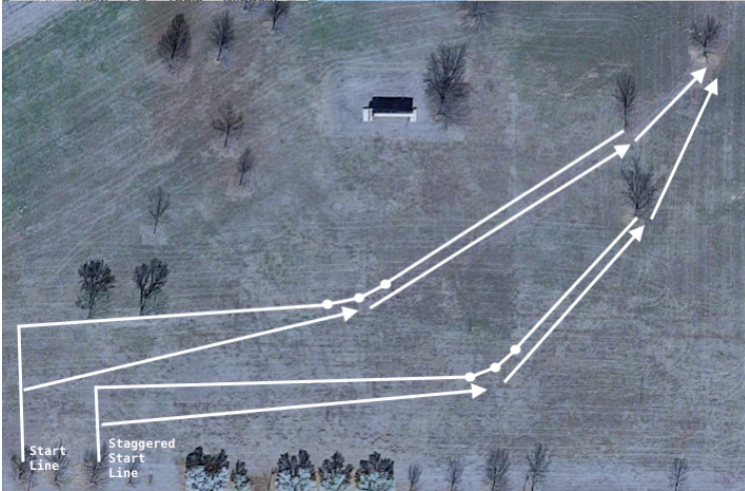
ENTRY: **ENTRIES DUE before 3:00PM THURSDAY, SEPTEMBER 12**
All entries will be done on-line at: www.endurousa.com
Teams and students must be entered on-line before the deadline through your ENDURO USA account. Teams will not be added at the meet. Each Team will receive a packet with bibs for each runner. The bib must be worn on the front (chest area). Students will not be allowed to start/enter a race without his/her bib. Junior High Students can NOT be entered through a High School Account. If you need assistance with your ENDURO USA account, contact Kevin McWatters at the following email address: kevin@runenduro.com, or Phone (405) 641-6006.

CHECK IN: Bring a copy of the printed from EUDURO USA Entries, to check in as a receipt of entry in exchange for team/coaches' packet and bib numbers.

START LINE INFORMATION

IN ORDER TO ACCOMMODATE MORE ATHLETES AT THE START LINE WE HAVE ADDED A SECOND, STAGGERED START LINE, 18 METERS IN FRONT OF THE START LINE. YOUR TEAM HAS THE OPTION OF STARTING FROM EITHER LINE.

BOTH LINES ARE EQUAL DISTANCE TO THE MERGE.



IF YOUR ATHLETES USE THE ORIGINAL START LINE, THEY MUST STAY TO THE RIGHT OF THEIR COURSE LINE TO THE TURN POINT.

IF YOUR ATHLETES USE THE STAGGERED START LINE, THEY MUST STAY TO THE RIGHT OF THEIR COURSE LINE TO THE TURN POINT.

PARKING INFORMATION

