

Eagle Classic at Chandler Park
Hosted by: Edison XC Boosters
Saturday October 10th, 2020

LIMITED TO 18 HS TEAM

Location: Chandler Park, 6500 W 21st St, Tulsa, OK 74107, bus parking in the back of the park, follow the bus parking signs

Online Entries Only: All entries must be done on <https://endurousa.com/login>

-----**Entry Deadline Thursday 10/8 at 7pm**

Teams and students must be entered on-line before the deadline through your ENDURO USA™ account. Teams will not be added at the meet. Each Team will receive a packet with bibs for each runner. The bib must be worn on the front (chest area). Students will not be allowed to start/enter a race without his/her bib. Junior High Students can NOT be entered through a High School Account. If you need assistance with your ENDURO USA™ account, contact Kevin McWatters at kevin@runenduro.com

We will not be doing an Elementary race this year. All spectators need to socially distance and wear a face mask, please. No spectators at Start or Finish area, only Coaches.

With circumstances changing, we may limit the number of JV runners and/or have 2 JV races.

Race Times and Schedule:

- Packets Available 7:45AM
- Coaches' Meeting 8:15AM
- Varsity Girls 5000m (7 runner limit) 8:30AM
- Varsity Boys 5000m (7 runner limit) 9:00AM
- JV Girls 5000m 9:30AM
- JV Boys 5000m 10:05AM
- Middle School Girls 1.5 mile 10:40AM
- Middle School Boys 1.5 mile 11:00AM

Awards:

- **Varsity Medals:** Top 20 Girls and Boys
- **JV Medals:** Top 20 Girls and Boys
- **Middle School:** Top 20 Girls and Boys
- **Team Plaque:** 1st, 2nd Varsity Division

Entry Fees:

- \$80 for each Varsity High School team, \$150 for both boys and girls
- JV runners are free with Varsity team entry. If no Varsity Team entry \$80 per team, \$150 for both boys and girls
- \$65 for each Middle School Team, \$110 for both boys and girls
- Schools with at least 5 runners must enter a Varsity Team
- Individual runner \$10 each

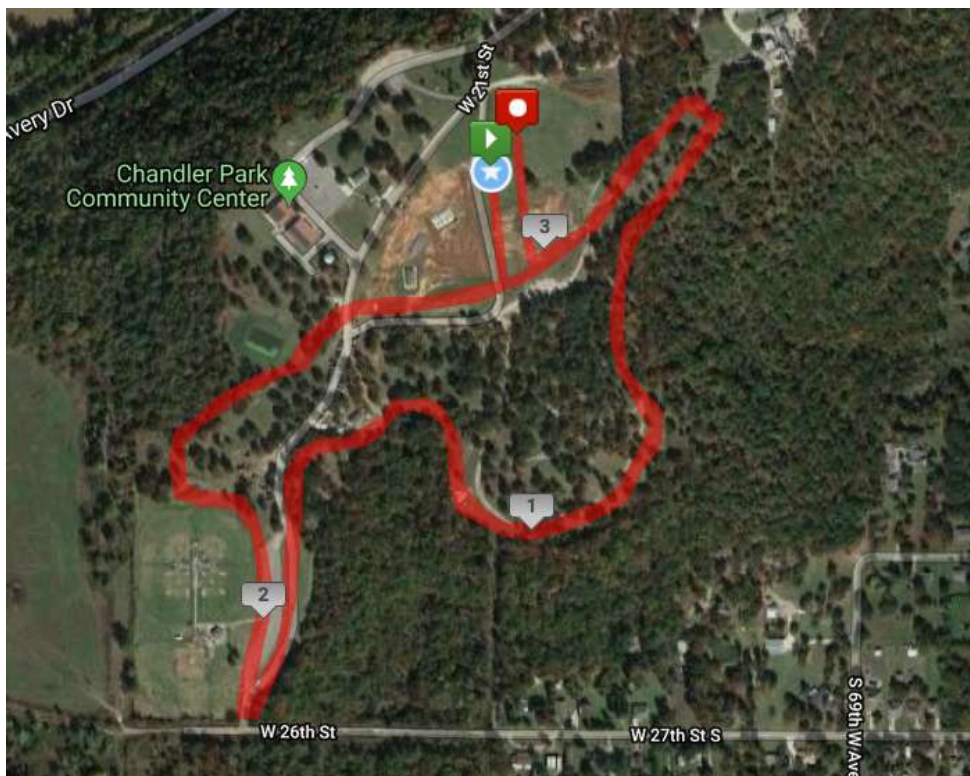
- Make checks payable to Edison XC Booster

Mail All Payments To:

Edison XC Booster
Attn: Barbara Pinkerton
3920 S Peoria
Tulsa, OK 74105

Questions? Coach Pinkerton, Edison Prep Head XC Coach: pinkertonxc@gmail.com

Approximate Course for 5000m – 2 loop course for 5000m



MS Race will be 1 loop