

# MOORELAND XC INVITATIONAL

You are invited to the 2nd Annual MOORELAND XC INVITATIONAL Cross Country Meet. **BRAND NEW COURSE!!! BRAND NEW LOCATION!**

**DATE:** TUESDAY, SEPTEMBER 20, 2021

**PLACE:** MOORELAND XC Course (3.25 miles south on County Road 214, it's paved). See attached map for detailed directions.

## **RACE SCHEDULE:**

4:00 P.M.	COACHES MEETING
4:30 P.M.	ELEMENTARY BOYS 6TH GRADE & BELOW (1300M) ELEMENTARY GIRLS 6TH GRADE & BELOW (1300M)
5:00 P.M.	JUNIOR HIGH GIRLS 7-8 GRADES ONLY (3200M)
5:30 P.M.	JUNIOR HIGH BOYS 7-8 GRADES ONLY (3200M)
6:00 P.M.	HIGH SCHOOL GIRLS (3200M)
6:30 P.M.	HIGH SCHOOL BOYS (5000M)

*EACH RACE WILL BEGIN AFTER THE PREVIOUS RACE FINISHES.*

*UNLIMITED ENTRIES PER DIVISION, TOP 7 WILL SCORE FOR TEAM PURPOSES.*

*Elementary will be combined boys & girls, medals to 50.*

**AWARDS:** TOP 25 IN EACH VARSITY DIVISION. ELEMENTARY TOP 50 (combined).

## **ENTRY FEE:**

HIGH SCHOOL, \$75.00 (unlimited entries)

JUNIOR HIGH, \$50.00 (unlimited entries)

ELEMENTARY, \$30.00 (unlimited entries)

INDIVIDUAL ENTRIES FOR ALL DIVISIONS ARE \$10.00 (UP TO FOUR ENTRIES)

**SPECTATOR ADMISSION:** \$5 per car, handicap parking available along south fence with views of the majority of the cross country course.

**PLEASE MAKE CHECKS PAYABLE TO:** MOORELAND PUBLIC SCHOOLS % XC

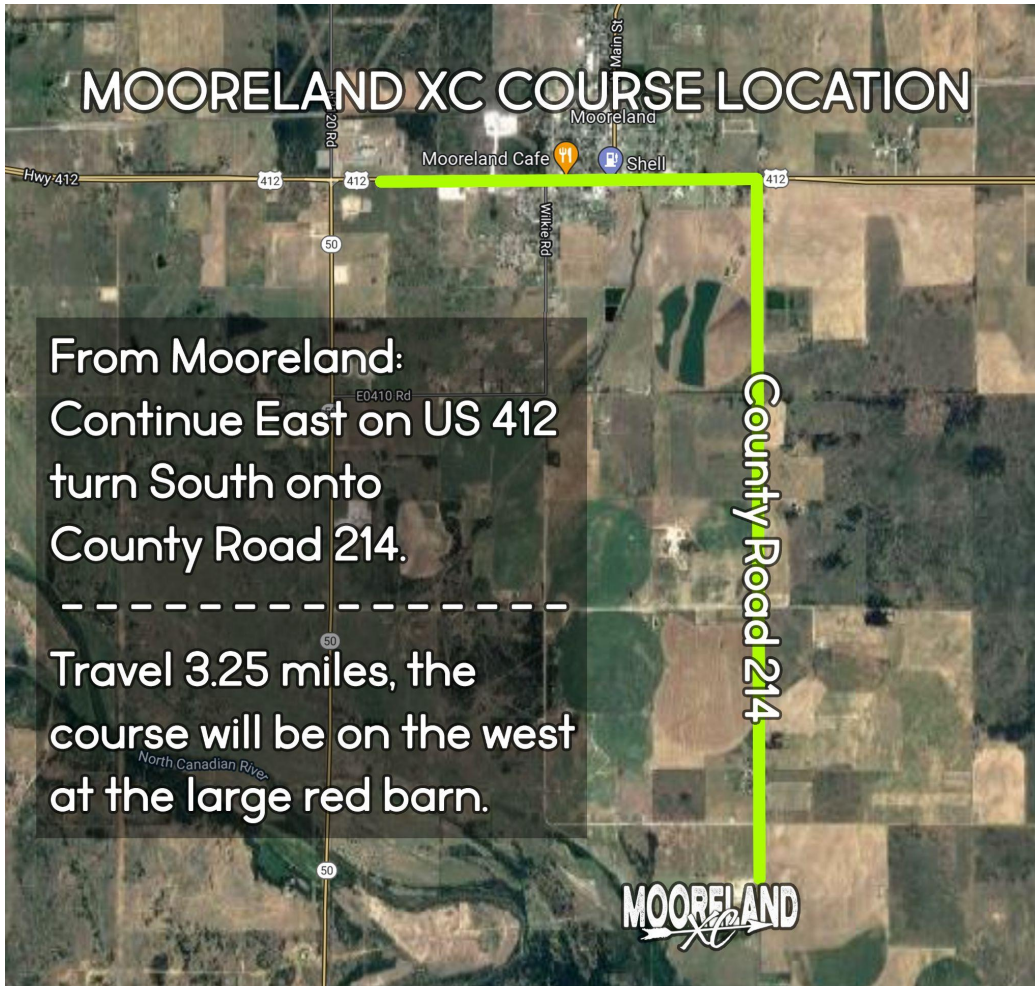
**Entries must be emailed on or before September 15. We look forward to seeing you!**

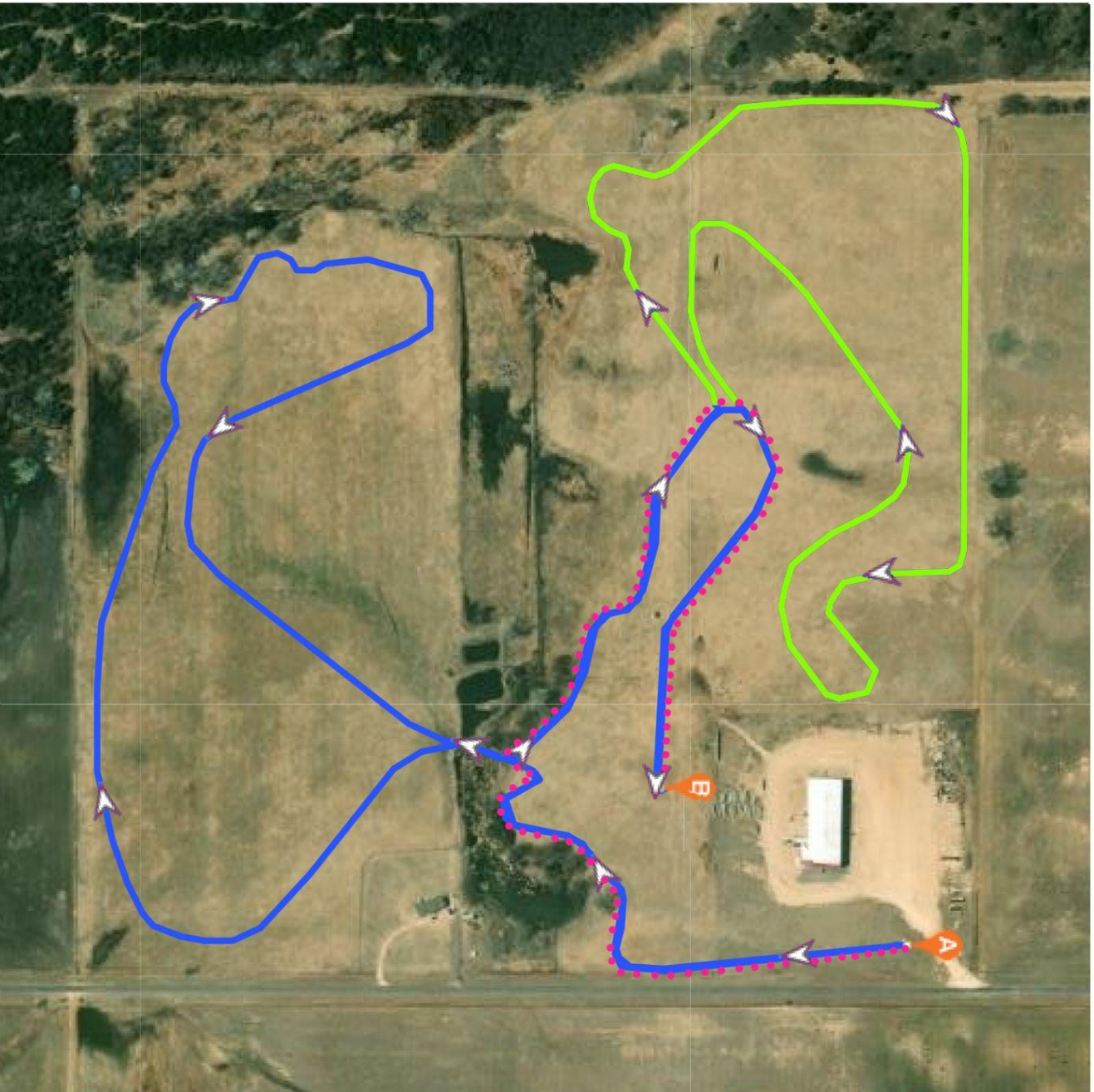
**QUESTIONS CALL OR TEXT:**

**KENDRA HOOVER (405) 761-8146 (CELL)**

**EMAIL: [hoover@mooreland.k12.ok.us](mailto:hoover@mooreland.k12.ok.us)**

# MOORELAND XC COURSE LOCATION





# MOORELAND

## COURSE LEGEND

HS BOYS 5000M BLUE & NEON

HS GIRLS 3200M BLUE

JH BOYS 3200M BLUE

JH GIRLS 3200M BLUE

ELEMENTARY 1300M PINK DOTS