

WEATHERFORD SAND PLUM INVITATIONAL
CROSS COUNTRY MEET

DATE: SATURDAY, AUGUST 20, 2022

PLACE: RADER PARK- NORTHEAST OF CITY, KIWANIS SOFTBALL COMPLEX
*It is a new course this year.

ENTRIES: Enter athletes through www.directathletics.com ---
entries will be

accepted from Mon., July. 25th - Wed, Aug 17th -- Entries
close at 10pm on Wednesday

IMPORTANT: teams will NOT be added at the meet. - - - NO
EXCEPTIONS

*Please remember to specify what division they are in
(HS Boys, HS Girls, MS Boys, MS Girls)*

RACE SCHEDULE:

8:15 A.M. COACHES MEETING
8:30 A.M VARSITY GIRLS (1.5 MILES)
9:00 VARSITY BOYS (2 MILES)
9:30 MIDDLE SCHOOL GIRLS 6-7-8 GRADES ONLY (1MILE)
10:00 MIDDLE SCHOOL BOYS 6-7-8 GRADES ONLY
(1.5 MILES)

*EACH RACE WILL BEGIN IMMEDIATELY AFTER THE PREVIOUS RACE
FINISHES.

AWARDS: TOP 25 IN **EACH** VARSITY DIVISION. SPECIAL TROPHY FOR
VARSITY BOY AND GIRL INDIVIDUAL CHAMPION.

ENTRY FEE: VARSITY GIRLS-----\$75.00
VARSITY BOYS-----\$75.00
MIDDLE SCHOOL GIRLS---\$50.00
MIDDLE SCHOOL BOYS---\$50.00
J.V. IS FREE WITH VARSITY ENTRY
INDIVIDUAL ENTRIES ARE \$10.00 (UP TO FOUR ENTRIES)
* TOTAL FEE IS \$ 250.00 FOR ALL 6 DIVISIONS

Mail checks to: Weatherford Public Schools; Attn: Kaleb Fischer
1409 Cypress, Weatherford, Oklahoma 73096

There will be a \$5 parking fee per vehicle! (Does not
apply to buses)

QUESTIONS CALL OR TEXT: KALEB FISCHER (580) 302-1617 (CELL)
EMAIL: kfischer@wpsok.org

Weatherford Sand Plum Invitational- MS Girls 1 Mile Course



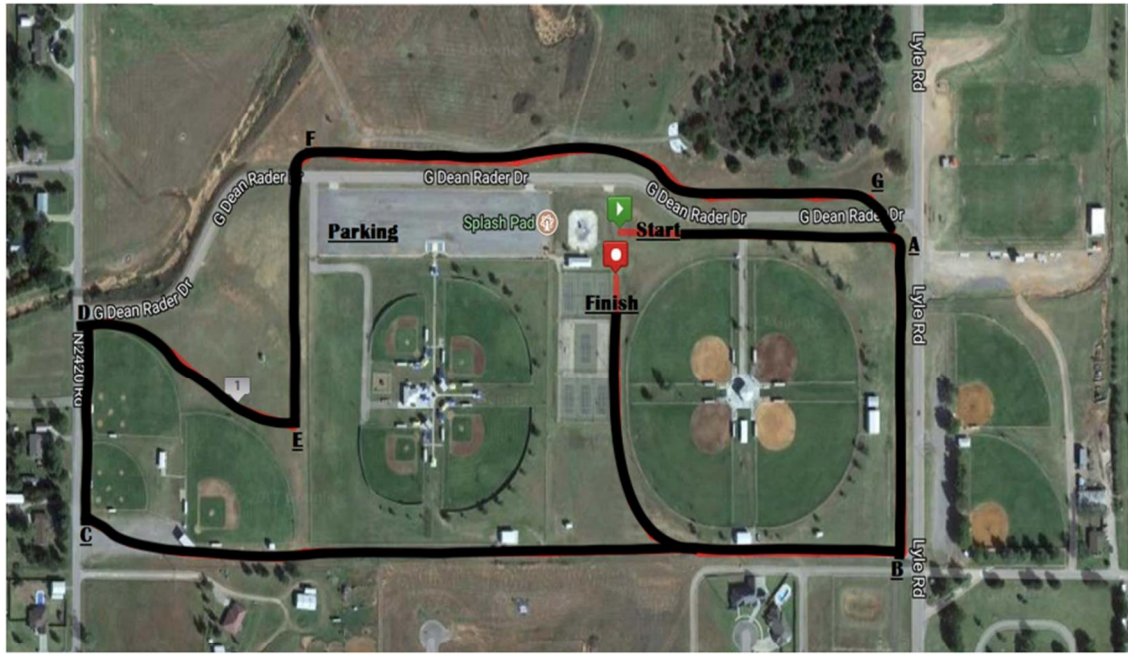
Two laps around the softball complex. On the first lap they stay to the right of the finish line and on the second lap they will go into the finish chute.

Weatherford Sand Plum Invitational- HS Girls/MS Boys 1.5 Mile Course



START → A → B → C → D → A → FINISH

Weatherford Sand Plum Invitational- HS Boys 2 Mile Course



START → A → B → C → D → E → F → G → A → B → FINISH