

MOORELAND

The logo features the word "MOORELAND" in large, blue, distressed block letters at the top. Below it, the word "UNASHAMED MEMORIAL" is written in a smaller, green, distressed font. In the center, there is a black graphic of a cross-country runner in mid-stride, with a long arrow pointing to the right, symbolizing the "XC" (cross-country) nature of the event.

UNASHAMED MEMORIAL

You are invited to the 2nd Annual MOORELAND UNASHAMED MEMORIAL Cross Country Meet. We are excited to run the Unashamed Memorial in honor and remembrance of our dear friend and former athlete Ben Brown on our home course. Ben was an inspiration to all. He was kind, generous, caring, hard working, dedicated, God fearing and an all around amazing person. He taught us all so many things and it was such an honor to know him all these years. He was someone who truly changed your life for the better without even knowing it. To know Ben was to love him, and by all of you being here means that he changed your life in some way.

DATE: FRIDAY, OCTOBER 13, 2023

PLACE: MOORELAND XC Course (3.25 miles south on County Road 214, it's paved). See attached map for detailed directions.

RACE SCHEDULE:

9:00 A.M.	COACHES MEETING
9:30 A.M.	HIGH SCHOOL BOYS (5000M)
10:00 A.M.	HIGH SCHOOL GIRLS (3200M)
10:30 A.M.	JUNIOR HIGH BOYS 7-8 GRADES ONLY (3200M)
11:00 A.M.	JUNIOR HIGH GIRLS 7-8 GRADES ONLY (3200M)
11:30 A.M.	ELEMENTARY (combined) 6TH GRADE & BELOW (1300M)
12:00 P.M.	ADULT OPEN DIVISION

*EACH RACE WILL BEGIN IMMEDIATELY AFTER THE PREVIOUS RACE FINISHES.
UNLIMITED ENTRIES PER DIVISION, TOP 7 WILL SCORE FOR TEAM PURPOSES.*

AWARDS: TOP 25 IN EACH DIVISION, ELEMENTARY 50

ENTRY FEE:

HIGH SCHOOL, \$75.00 (unlimited entries)

JUNIOR HIGH, \$50.00 (unlimited entries)

ELEMENTARY, \$30.00 (unlimited entries)

INDIVIDUAL ENTRIES FOR ALL DIVISIONS ARE \$10.00 (UP TO FOUR ENTRIES)

OPEN DIVISION ENTRY FEE: \$10 per participant, walk up registration is welcome. Please check-in at the finish line. Participants are welcome to compete, run, jog, or walk in memory of Ben Brown.

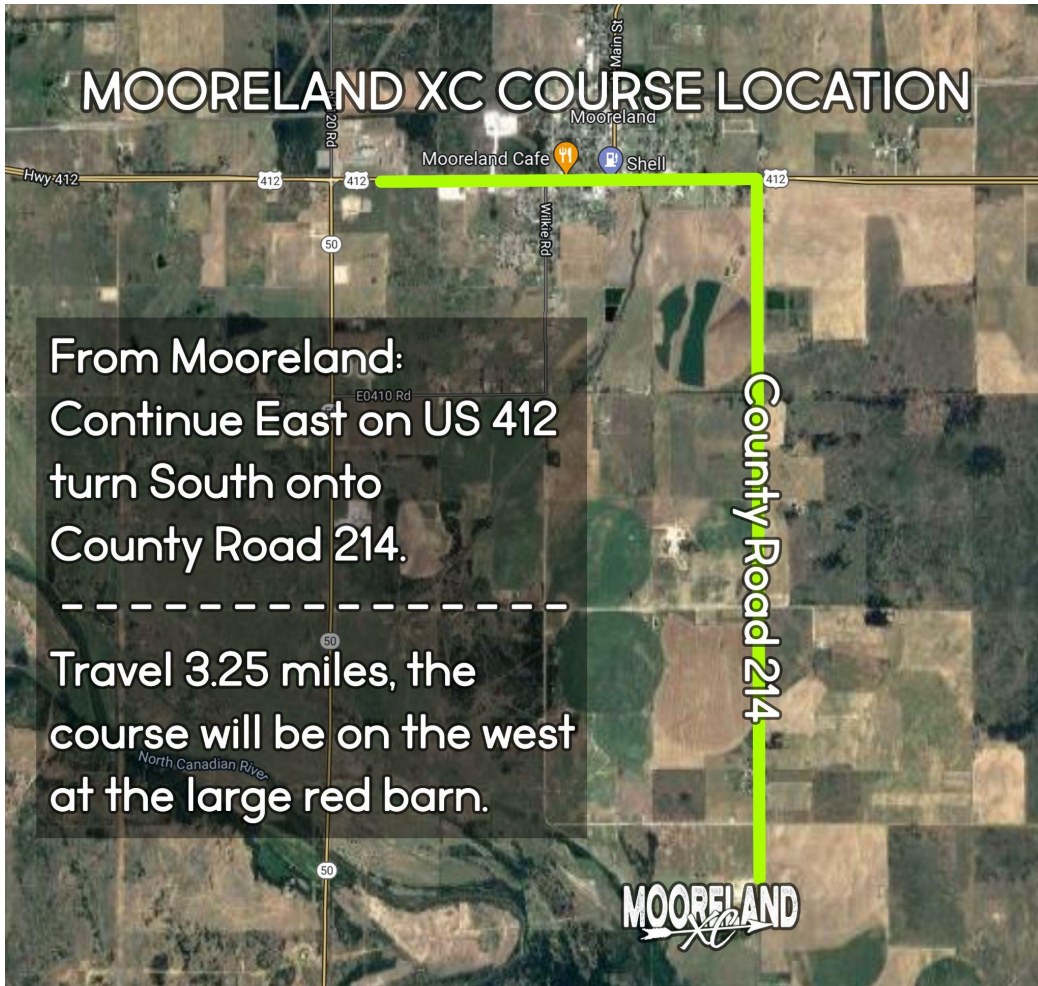
SPECTATOR ADMISSION: \$5 per car, handicap parking available along south fence with views of the majority of the cross country course.

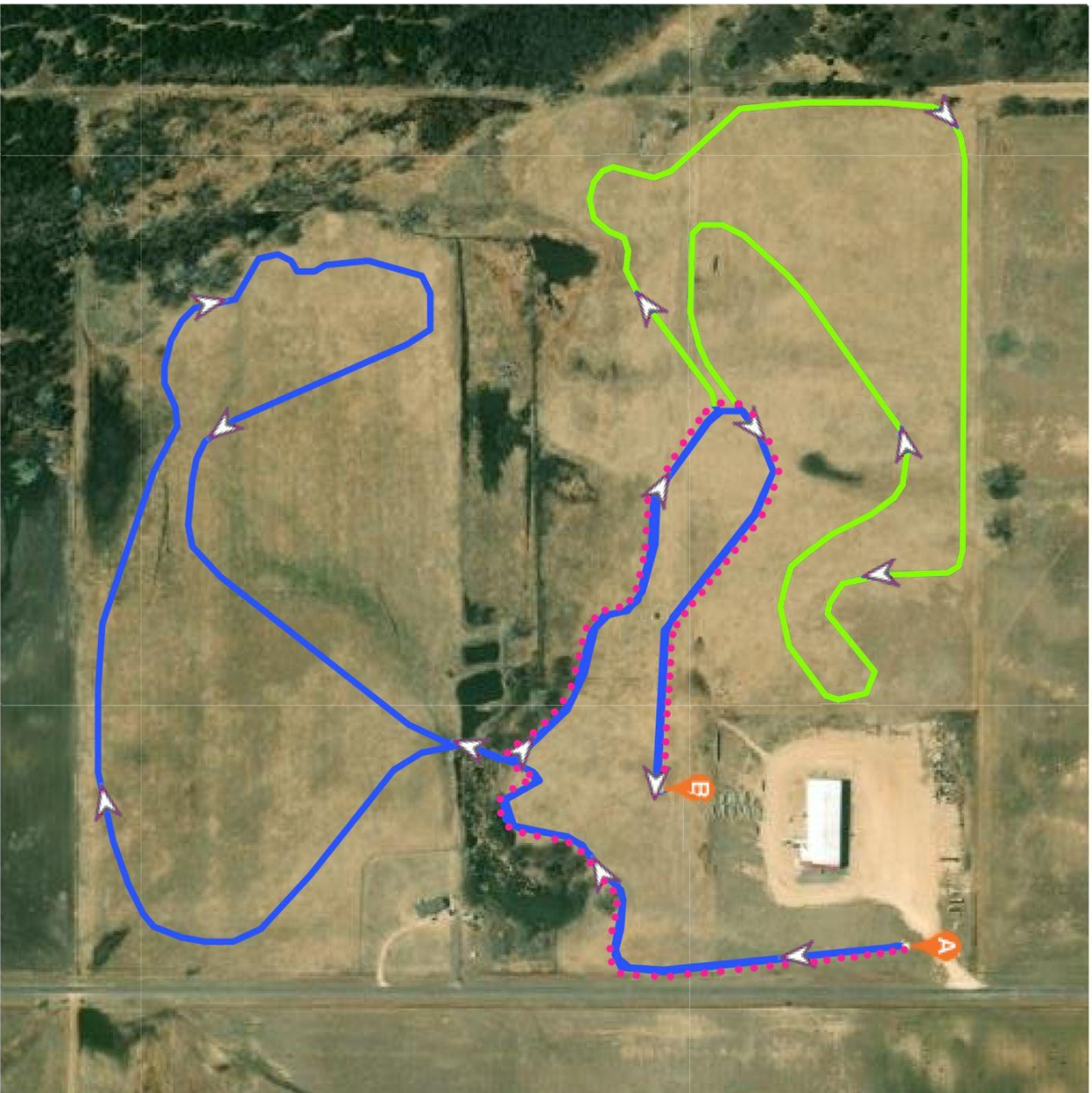
PLEASE MAKE CHECKS PAYABLE TO: MOORELAND PUBLIC SCHOOLS c/o XC

ONLINE ENTRIES VIA ENDURO.
We look forward to seeing you!

QUESTIONS CALL OR TEXT:
KENDRA HOOVER (405) 761-8146 (CELL)
EMAIL: hoover@mooreland.k12.ok.us

MOORELAND XC COURSE LOCATION





COURSE LEGEND

- HS BOYS 5000M BLUE & NEON
- HS GIRLS 3200M BLUE
- JH BOYS 3200M BLUE
- JH GIRLS 3200M BLUE
- ELEMENTARY 1300M PINK DOTS