

MOORELAND XC INVITATIONAL

You are invited to the 3rd Annual MOORELAND XC INVITATIONAL Cross Country Meet.

DATE: TUESDAY, SEPTEMBER 26, 2023

PLACE: MOORELAND XC Course (3.25 miles south on County Road 214, it's paved). See attached map for detailed directions.

RACE SCHEDULE:

4:00 P.M.	COACHES MEETING
4:30 P.M.	ELEMENTARY BOYS & GIRLS 6TH GRADE & BELOW (1300M)
5:00 P.M.	JUNIOR HIGH GIRLS 7-8 GRADES ONLY (3200M)
5:30 P.M.	JUNIOR HIGH BOYS 7-8 GRADES ONLY (3200M)
6:00 P.M.	HIGH SCHOOL GIRLS (3200M)
6:30 P.M.	HIGH SCHOOL BOYS (5000M)

EACH RACE WILL BEGIN AFTER THE PREVIOUS RACE FINISHES.

UNLIMITED ENTRIES PER DIVISION, TOP 7 WILL SCORE FOR TEAM PURPOSES.

AWARDS: TOP 25 IN EACH VARSITY DIVISION. ELEMENTARY TOP 50 (combined).

ENTRY FEE:

HIGH SCHOOL, \$75.00 (unlimited entries)

JUNIOR HIGH, \$50.00 (unlimited entries)

ELEMENTARY, \$30.00 (unlimited entries)

INDIVIDUAL ENTRIES FOR ALL DIVISIONS ARE \$10.00 (UP TO FOUR ENTRIES)

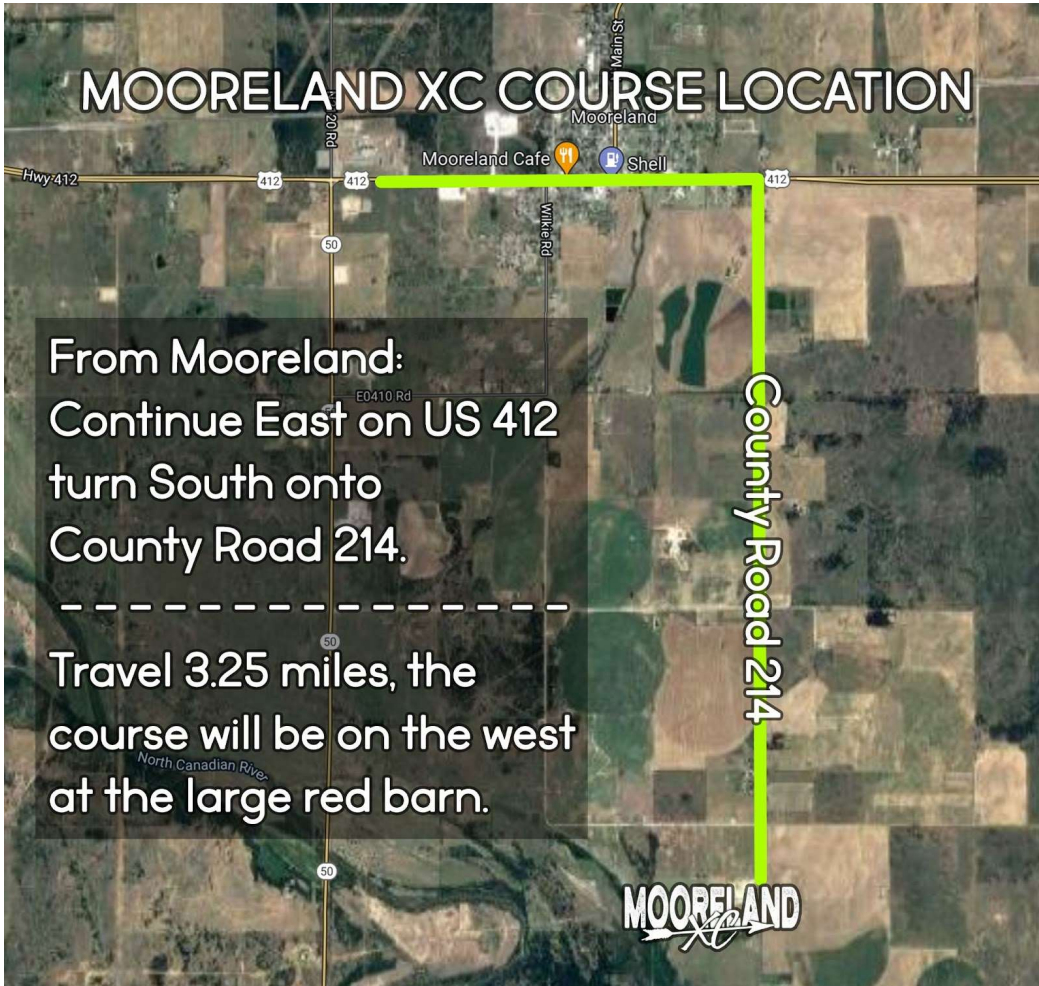
SPECTATOR ADMISSION: \$5 per car, handicap parking available along south fence with views of the majority of the cross country course.

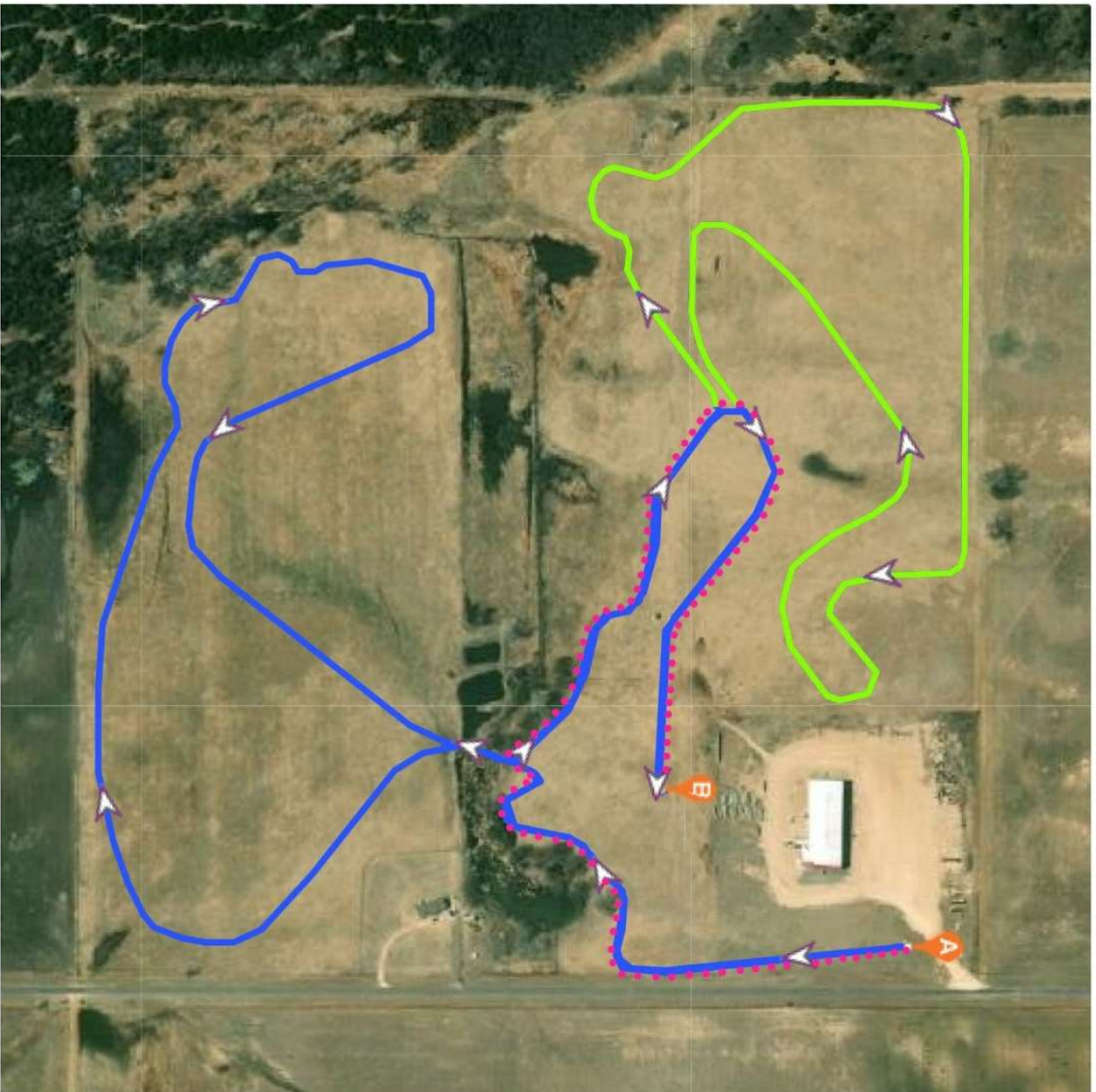
PLEASE MAKE CHECKS PAYABLE TO: MOORELAND PUBLIC SCHOOLS % XC

Entries must be emailed on or before September 22. We look forward to seeing you!

**QUESTIONS CALL OR TEXT:
KENDRA HOOVER (405) 761-8146 (CELL)
EMAIL: hoover@mooreland.k12.ok.us**

MOORELAND XC COURSE LOCATION





MOORELAND

COURSE LEGEND

HS BOYS 5000M BLUE & NEON

HS GIRLS 3200M BLUE

JH BOYS 3200M BLUE

JH GIRLS 3200M BLUE

ELEMENTARY 1300M PINK DOTS

