



WATONGA
Cross Country Invitational
Saturday, October 7, 2023



Location: From HWY 33, travel 3 miles north on HWY 8; then go West ½ mile. The course is on the south side of the road. There are no dressing facilities at the site, porta-potties will be available. There will be a \$5 per car gate admission.

Runners: Any number of runners may participate from a school and compete for individual medals, but only the top seven will be used in team scoring.

Awards: Medals for the top 30 places in each of the High School and Middle School Divisions.

The Middle School Division is for 8th grade and under. Elementary School Division is for 5th grade and under. We will start the next race as soon as we can when the previous race is completed.

Divisions	Distance	Event Time
High School Boys	5000 Meters	9:00am
High School Girls	3200 Meters	
Middle School Boys	3200 Meters	
Middle School Girls	2500 Meters	
Elementary Boys & Girls	1000 Meters(3rd and below) 1735 Meters(4&5 grades)	

Entry Fees: High School team (boys *or* girls) \$ 80 per team
 Middle School team (boys *or* girls) \$ 60 per team
 Individual runner (HS or MS) \$ 15 (less than 5 runners)
 Elementary School (boys *or* girls) \$ 5 each

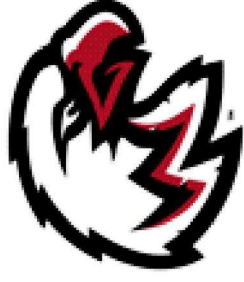
Make checks payable to: Watonga Public Schools.

On-line Entry Deadline: Thursday, October 5th @ 7pm. ON-LINE ENTRIES: Coaches must submit all entries on the ENDURO USA™ website: www.endurousa.com. - - - NO ADDITIONAL ENTRIES AFTER THE DEADLINE. - - Complete ALL of the steps on the "Entries Window". Make sure to "VERIFY". TEAMS WILL NOT BE ADDED AT THE MEET. If you need help with your ENDURO USA™ account, please email your questions to: cara@runenduro.com.

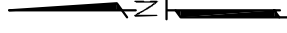
If you have any questions regarding the meet, please contact:

Jim Bob Coleman-Watonga Cross Country Coach
 580-623-7362 School
 580-478-2039 Cell
jcoleman@watonga.k12.ok.us

WATONGA
CROSS COUNTRY

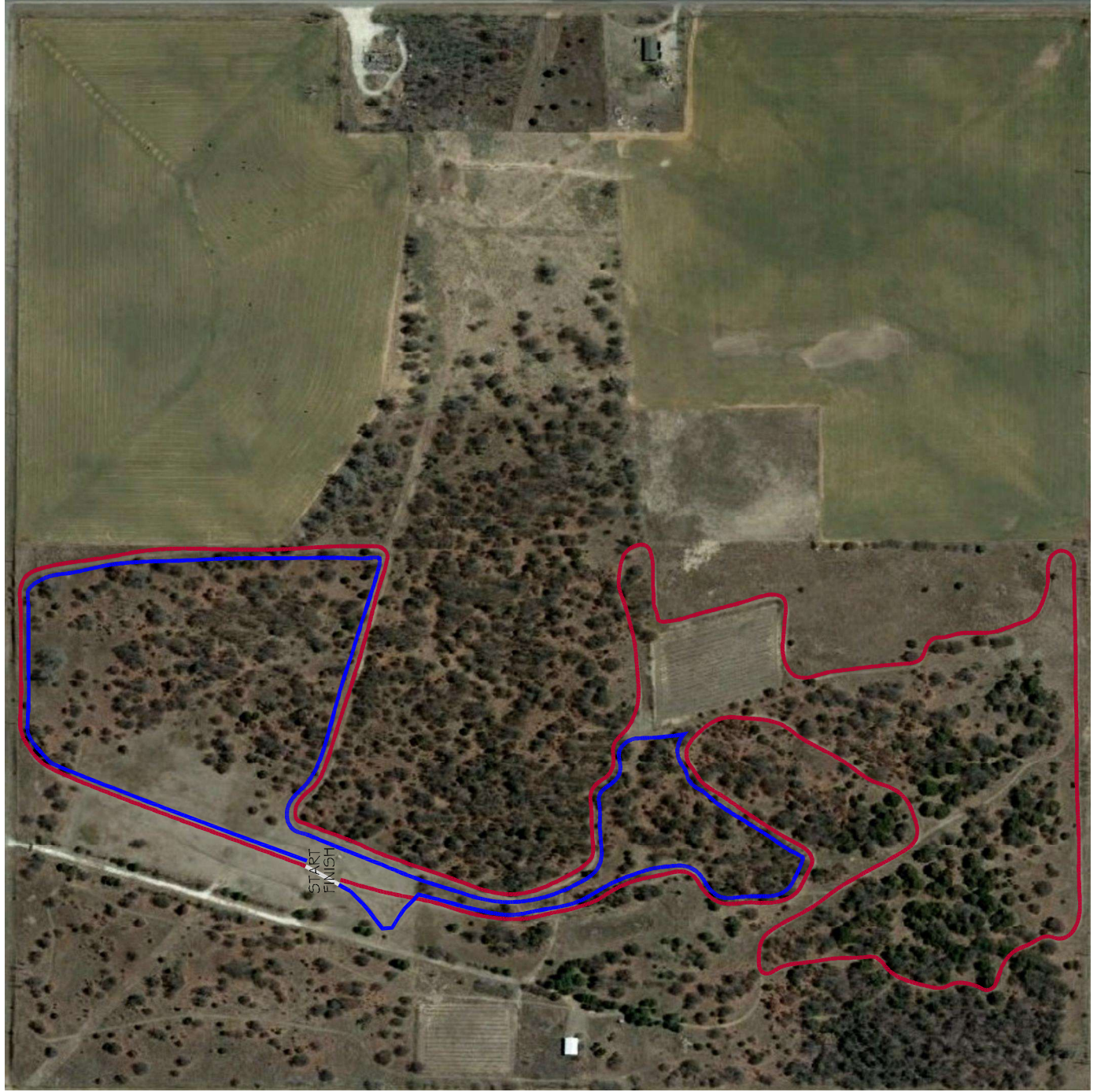


5000 METERS



1ST LAP

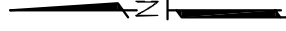
2ND LAP



WATONGA
CROSS COUNTRY



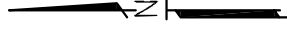
3200 METERS



WATONGA
CROSS COUNTRY



2500 METERS



WATONGA
CROSS COUNTRY



1735 METERS

