

WEATHERFORD SAND PLUM INVITATIONAL **CROSS COUNTRY MEET**

DATE: SATURDAY, AUGUST 19, 2023

PLACE: RADER PARK- NORTHEAST OF CITY, KIWANIS SOFTBALL COMPLEX

*It is a new course this year.

ENTRIES: Coaches must submit all entries on the ENDURO USA™ website:

www.endurousa.com — **NO ADDITIONAL ENTRIES AFTER DEADLINE.** — **ONLINE**

ENTRIES DEADLINE: the day before the meet @ 12:00pm. Complete ALL of the steps on the “Entries Window”, make sure to “VERIFY”. **TEAMS WILL NOT BE ADDED AT THE MEET.** If you need help with your Enduro USA™ account, please email your questions to: cara@runenduro.com.

Please remember to specify what division they are in (HS Boys, HS Girls, MS Boys, MS Girls)

RACE SCHEDULE:

8:15 A.M. COACHES MEETING

8:30 A.M VARSITY GIRLS (1.5 MILES)

9:00 VARSITY BOYS (2 MILES)

9:30 MIDDLE SCHOOL GIRLS 6-7-8 GRADES (1MILE)

10:00 MIDDLE SCHOOL BOYS 6-7-8 GRADES (1.5 MILES)

*EACH RACE WILL BEGIN IMMEDIATELY AFTER THE PREVIOUS RACE FINISHES.

AWARDS: TOP 30 IN EACH VARSITY DIVISION. SPECIAL TROPHY FOR HS VARSITY BOY AND GIRL INDIVIDUAL CHAMPION.

ENTRY FEE: VARSITY GIRLS-----\$75.00

VARSAITY BOYS-----\$75.00

MIDDLE SCHOOL GIRLS---\$50.00

MIDDLE SCHOOL BOYS---\$50.00

J.V. IS FREE WITH VARSITY ENTRY

INDIVIDUAL ENTRIES ARE \$10.00 (UP TO FOUR ENTRIES)

* TOTAL FEE IS \$ 250.00 FOR ALL 6 DIVISIONS

Mail checks to: Weatherford Public Schools; Attn: Kaleb Fischer
1409 Cypress, Weatherford, Oklahoma 73096

There will be a \$5 parking fee per vehicle! (Does not apply to buses)

QUESTIONS CALL OR TEXT: KALEB FISCHER (580) 302-1617 (CELL)

EMAIL: kfischer@wpsok.org

Weatherford Sand Plum Invitational- MS Girls 1 Mile Course



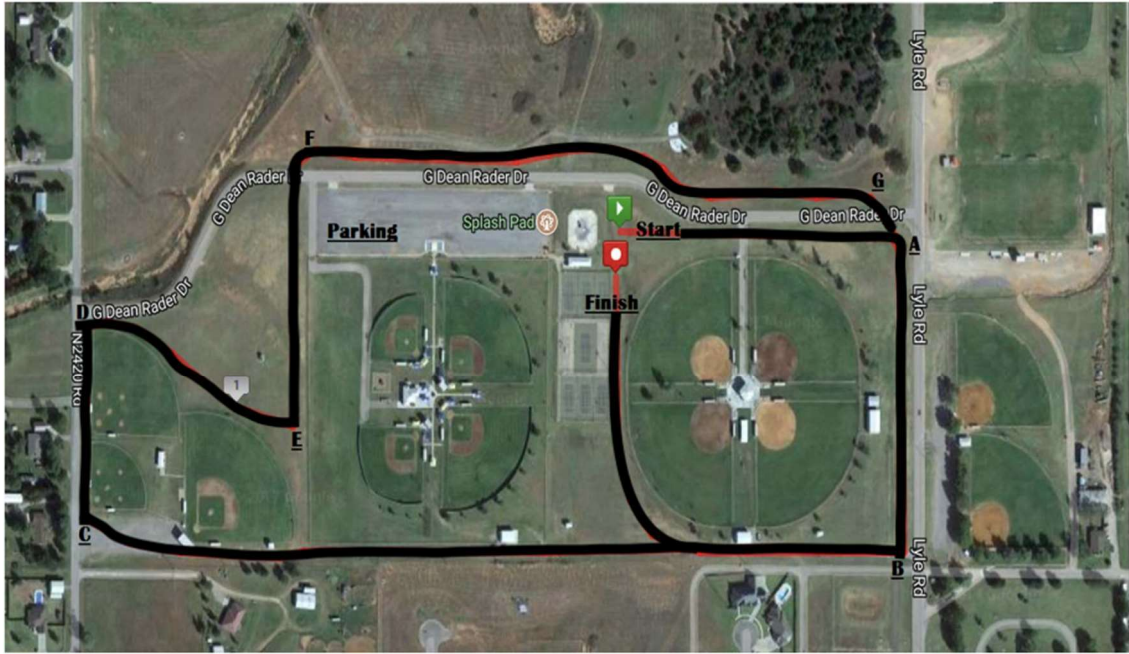
Two laps around the softball complex. On the first lap they stay to the right of the finish line and on the second lap they will go into the finish chute.

Weatherford Sand Plum Invitational- HS Girls/MS Boys 1.5 Mile Course



START → A → B → C → D → A → FINISH

Weatherford Sand Plum Invitational- HS Boys 2 Mile Course



START → A → B → C → D → E → F → G → A → B → FINISH