



40TH ANNUAL HOLLAND HALL CROSS COUNTRY INVITATIONAL

SATURDAY, SEPTEMBER 20, 2025



LOCATION & COURSE

Our course is located completely within our campus at 5666 E. 81st Street, between Sheridan and Yale, in Tulsa. It is a rolling grass/dirt course, crossing short stretches of gravel and pavement with two relatively steep climbs through a wooded trail for the 5000m course. The 3200m course is a 2 loop course with no hills.

<u>SCHEDULE</u>	<u>Entry Limits</u>	<u>Time</u>	<u>Distance</u>
Coaches Meeting	(Startling Line)	8:50 am	
Varsity Boys	<i>7 runners</i>	9:00 am	5000m
Varsity 5k Girls	<i>unlimited</i>	9:30 am	5000m
JV Boys	<i>unlimited</i>	10:00 am	5000m
Varsity 2 Mile Girls	<i>unlimited</i>	10:30 am	3200m
Jr. High Boys	<i>unlimited</i>	10:55 am	3200m
Jr. High Girls	<i>unlimited</i>	11:15 am	3200m
Elementary Boys	<i>unlimited</i>	11:35 am	1600m
Elementary Girls	<i>unlimited</i>	11:50 am	1600m

NEW LAST YEAR - There will be 2 high school girl races, 5k and 2 Mile. You can enter in as many runners in either race. Each school can enter in both races, you can enter some in the 5k and the rest in 2 Mile.

REGISTRATION

Coaches must submit all entries on the Entries and Results website: www.entriesandresults.com. — **NO ADDITIONAL ENTRIES AFTER THE DEADLINE.** — **ONLINE ENTRIES DEADLINE: SEPTEMBER 19 at noon.** Complete ALL the steps on the “Entries Window”. Make sure to “VERIFY”. TEAMS WILL NOT BE ADDED AT THE MEET. If you need help with your Entries and Results™ account, please email your questions to jhughes@elginps.net.

www.entriesandresults.com has been loaded with your team roster from last cross country season. All you need to do is edit any changes from last season and add any new athletes for the 2025 season.

MEET TIMING & RESULTS

RFID Chip Timing for the meet is provided by 12:1 Running Timing Services. Live results are available at www.twelve1running.com.

ENTRY FEE

High School: Boys - \$50; Girls - \$50 or \$85 both high school teams or \$10 per individual.

Junior High: Boys - \$50; Girls - \$50 or \$85 for both Junior High teams or \$10 per individual.

JV teams are free with varsity team entered if not same as varsity fee.

Elementary race is free.

Make checks payable to Holland Hall School.

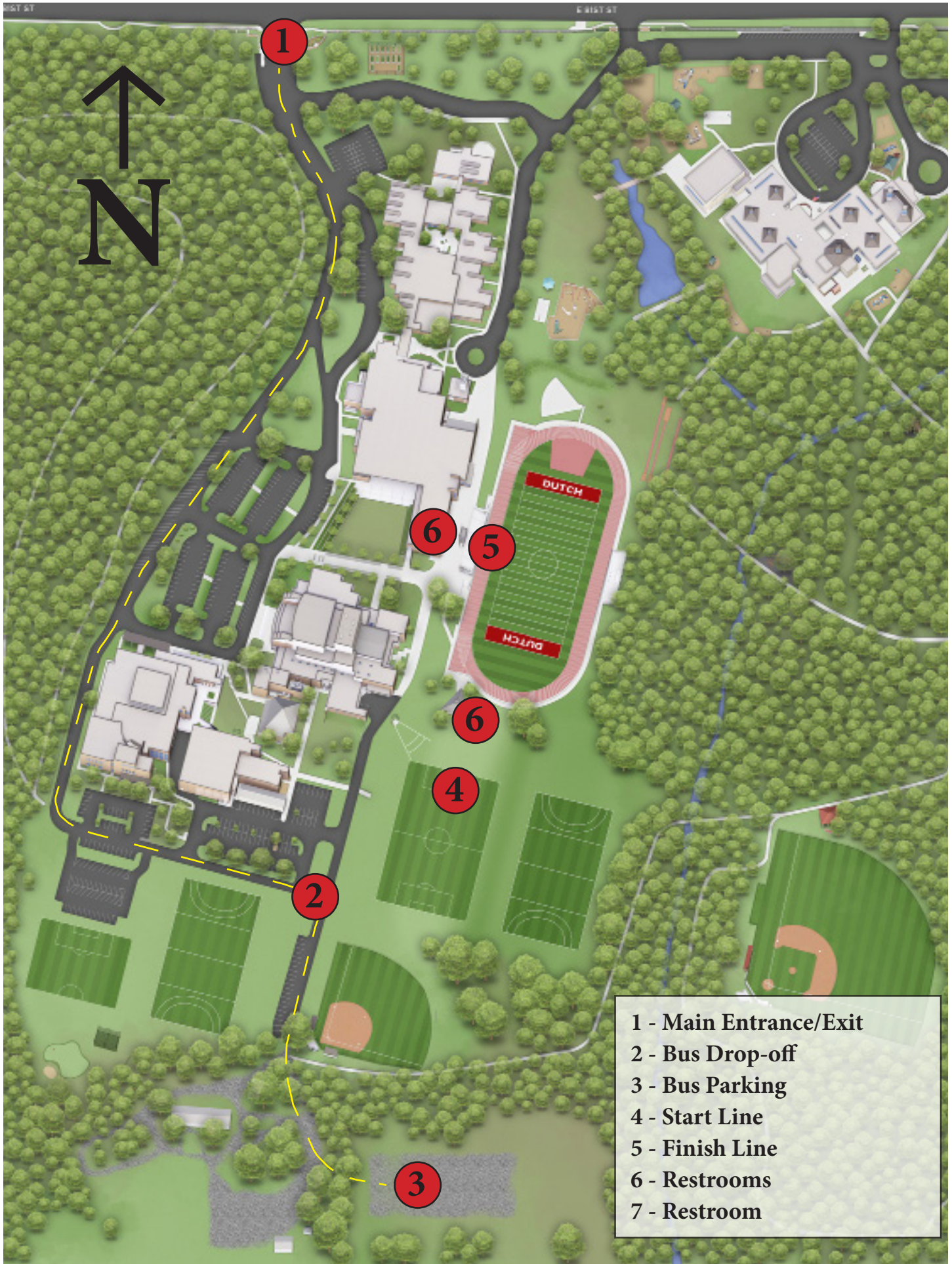
AWARDS

Trophies will be given to the top three schools in Varsity/Jr High divisions. Medals will be awarded to the top fifteen (15) Varsity/Jr High individuals and top ten (10) JV individuals.

CONTACT

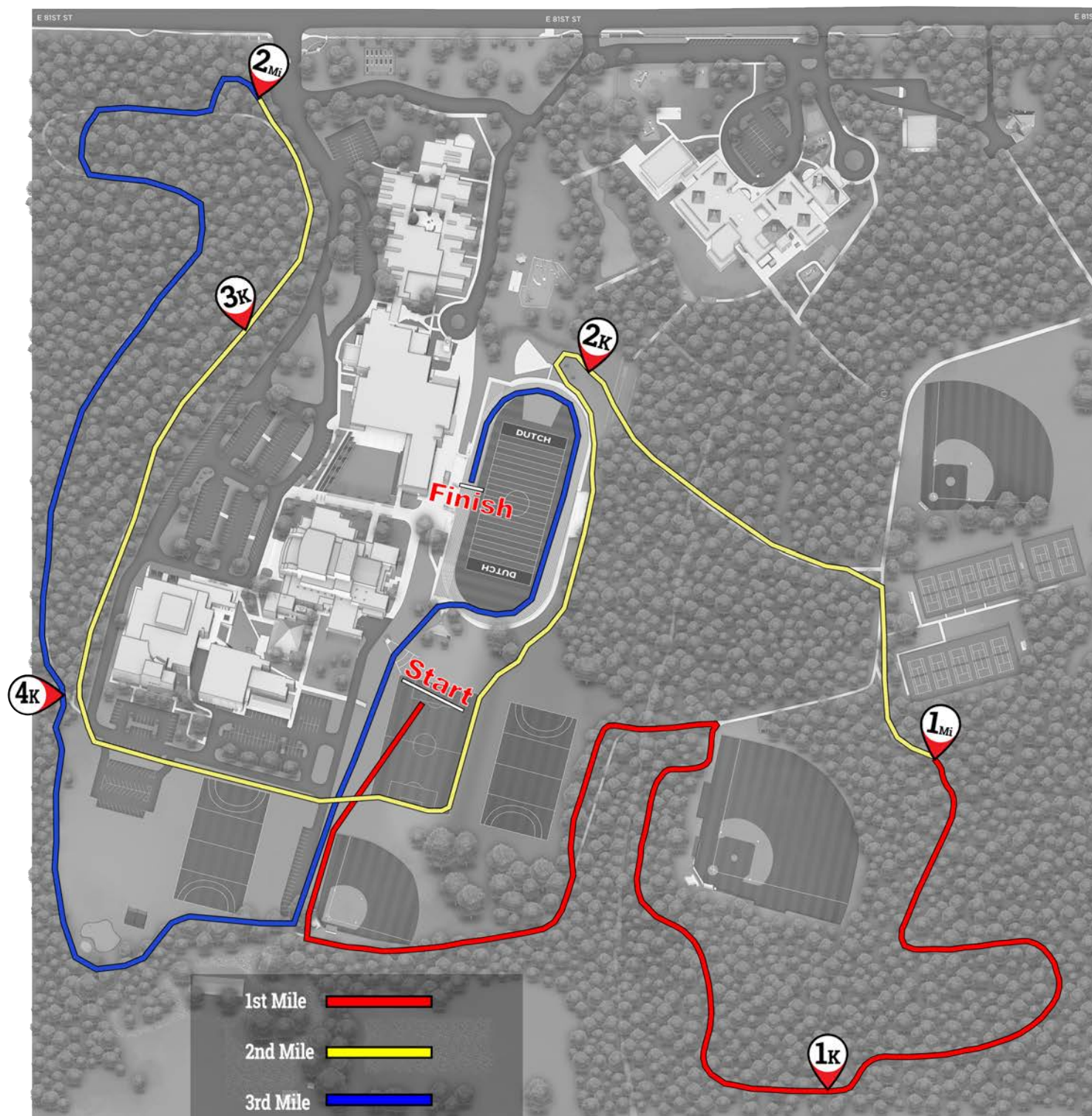
Greg Spencer
5666 E. 81st St.
Tulsa, OK 74137

Office Phone: 539-476-8166
Cell Phone: 918-510-8174
Fax Number: 918-481-1145
Email : gspencer@hollandhall.org

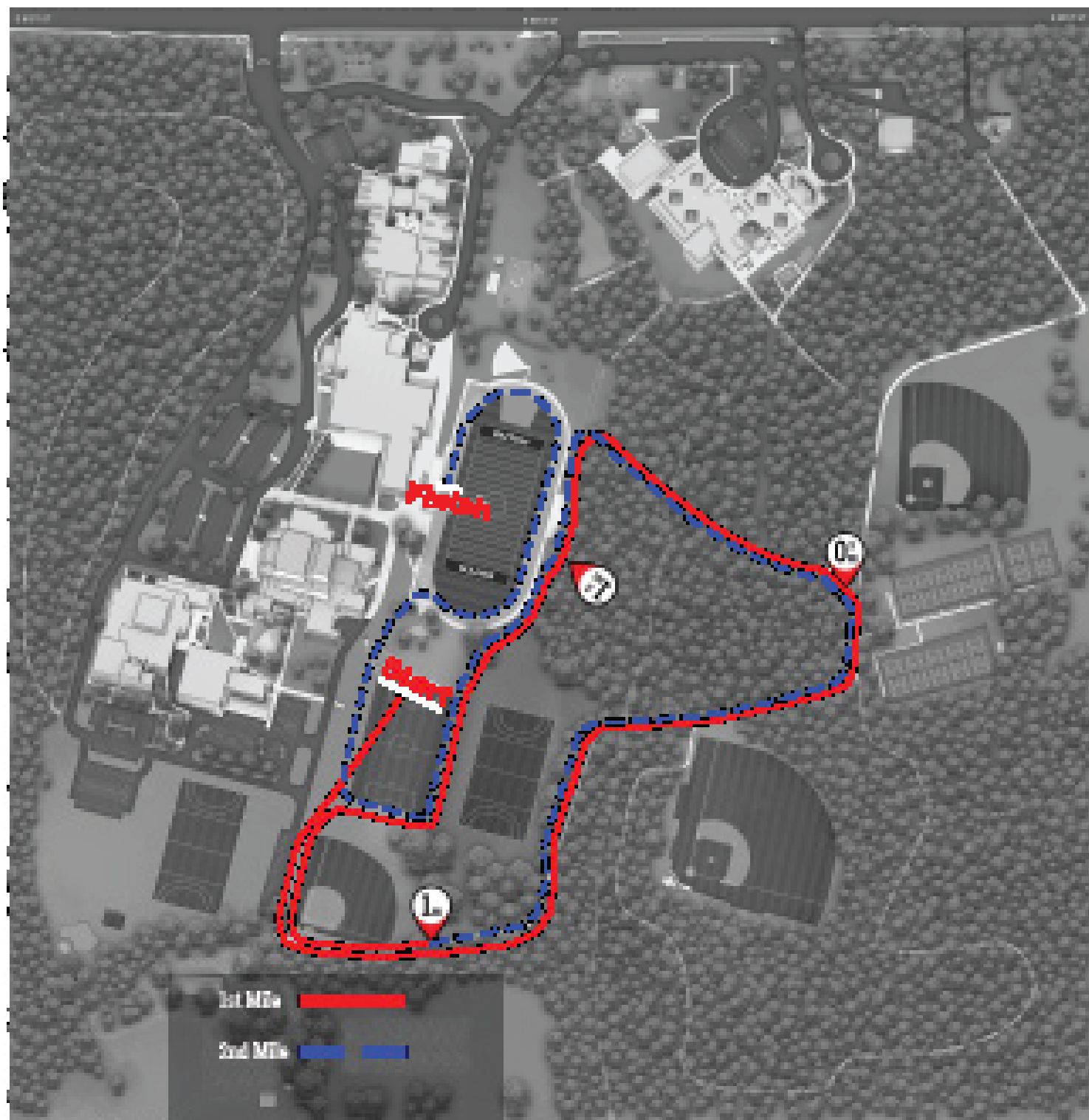


- 1 - Main Entrance/Exit
- 2 - Bus Drop-off
- 3 - Bus Parking
- 4 - Start Line
- 5 - Finish Line
- 6 - Restrooms
- 7 - Restroom

Holland Hall Cross Country 5000m



Holland Hall Cross Country 3200m



Holland Hall Cross Country 1600m

