



You are invited to the 5th Annual MOORELAND XC INVITATIONAL Cross Country Meet.

DATE: SATURDAY, SEPTEMBER 6, 2025

PLACE: MOORELAND XC Course (3.25 miles south on County Road 214, it's paved). See attached map for detailed directions.

RACE SCHEDULE:

9:00 A.M.	COACHES MEETING
9:30 A.M.	HIGH SCHOOL BOYS (5000M)
10:00 A.M.	HIGH SCHOOL GIRLS (3200M)
10:30 A.M.	JUNIOR HIGH BOYS 7-8 GRADES ONLY (3200M)
11:00 A.M.	JUNIOR HIGH GIRLS 7-8 GRADES ONLY (3200M)
11:30 A.M.	ELEMENTARY (combined) 6TH GRADE & BELOW (1300M)

EACH RACE WILL BEGIN AFTER THE PREVIOUS RACE FINISHES. UNLIMITED ENTRIES PER DIVISION.

AWARDS: TOP 15 IN EACH VARSITY DIVISION. ELEMENTARY TOP 25(combined).

ENTRY FEE:

HIGH SCHOOL, \$75.00 (unlimited entries)

JUNIOR HIGH, \$50.00 (unlimited entries)

ELEMENTARY, \$30.00 (unlimited entries)

INDIVIDUAL ENTRIES FOR ALL DIVISIONS ARE \$10.00 (UP TO FOUR ENTRIES)

SPECTATOR ADMISSION: \$5 per car, handicap parking available along south fence with views of the majority of the cross country course.

PLEASE MAKE CHECKS PAYABLE TO: MOORELAND PUBLIC SCHOOLS % XC

ON-LINE ENTRIES- Coaches must submit all entries on the Entries and Results website:

www.entriesandresults.com. — NO ADDITIONAL ENTRIES AFTER THE DEADLINE.

—ONLINE ENTRIES DEADLINE: (**** INSERT DAY PRIOR TO MEET HERE ***) at noon.

Complete ALL the steps on the "Entries Window". Make sure to "VERIFY". TEAMS WILL NOT BE ADDED AT THE MEET. If you need help with your Entries and Results™ account, please email your questions to jhughes@elginps.net.

www.entriesandresults.com has been loaded with your team roster from last cross country season. All you need to do is edit any changes from last season and add any new athletes for the 2025 season

MEET TIMING & RESULTS- RFID Chip Timing for the meet is provided by 12:1 Running Timing Services. Live results are available at www.twelve1running.com.

QUESTIONS CALL OR TEXT: KENDRA HOOVER (405) 761-8146 EMAIL: hoover@mooreland.k12.ok.us



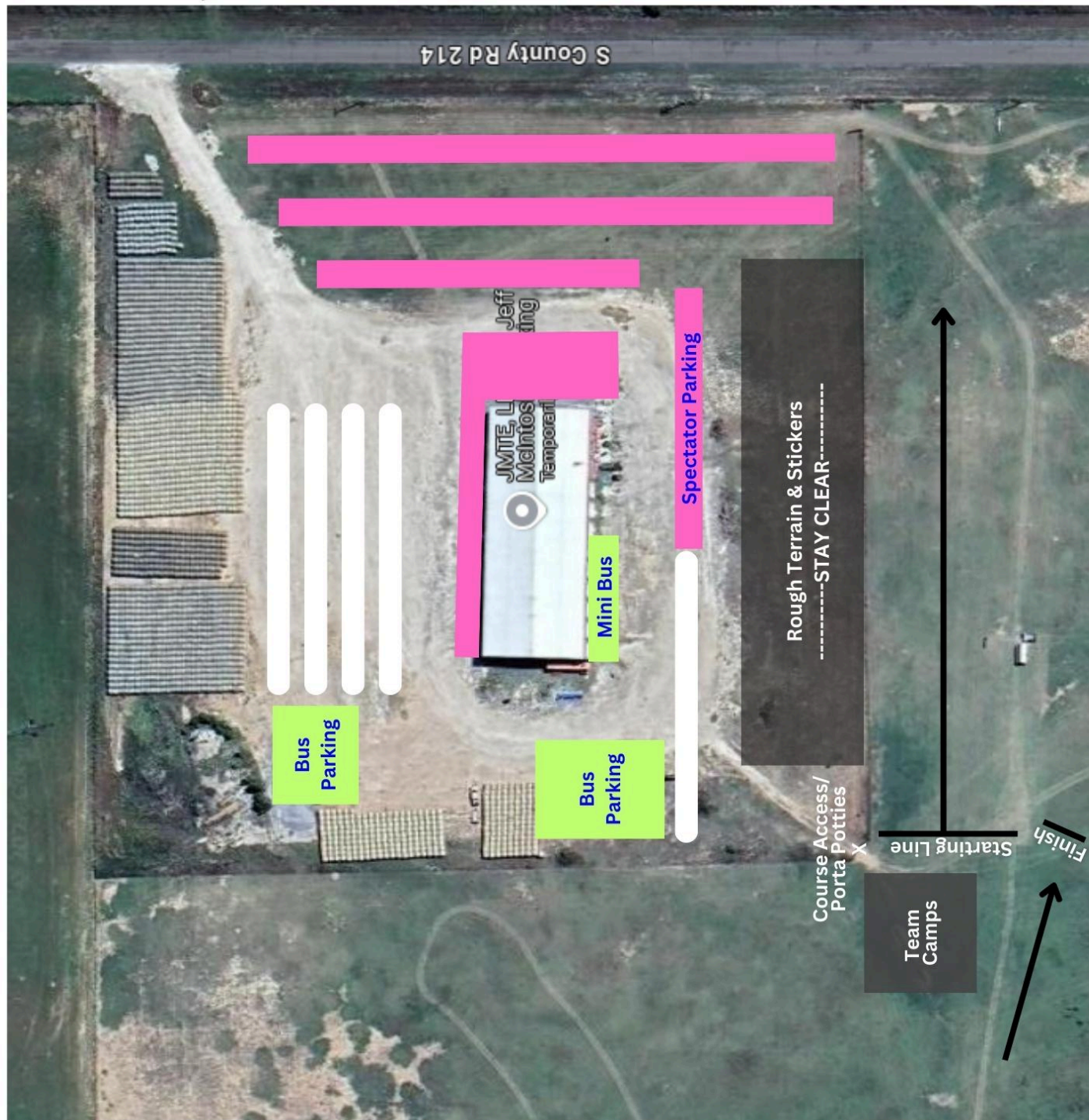
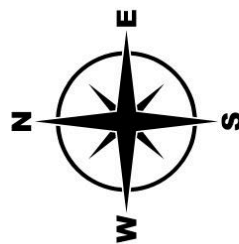
PARKING

Bus Parking

Please back into the spaces available.

Spectator Parking

is available on the grass, the property owner has a large portion used for his cattle feed storage (hay & silage).





COURSE LEGEND

HS BOYS 5K BLUE + NEON

HS GIRLS 3200M BLUE

JH BOYS 3200M BLUE

JH GIRLS 3200M BLUE

ELEMENTARY 1200M PINK DOTS

