

# 2025 Sapulpa Chieftain Cross Country Meet

Saturday, August 30, 2025

Sapulpa's Westside Sports Complex

1611 S. Wickham Road, Sapulpa, OK (behind Sapulpa Wal-Mart)

8:00 a.m.	Coaches' Meeting		
8:15 a.m.	Elementary Girls	1 mile	awards to all finishers
8:40 a.m.	Elementary Boys	1 mile	awards to all finishers
9:05 a.m.	Varsity and JV Girls	1 mile	20 medals
9:25 a.m.	Varsity and JV Girls	2 miles	20 medals
9:55 a.m.	Varsity Boys	2 miles	20 medals
Coach Joe Bill Lierly Memorial race, the winner of this division will receive a commemorative plaque.			
10:20 a.m.	JV Boys	2 miles	20 medals
10:50 a.m.	JH Girls (7-8th)	1 mile	20 medals
11:10 a.m.	JH Boys (7-8th)	1 mile	20 medals

\*Due to multiple requests for a girls' two mile division, coaches may choose whether to run their high school girls in the one mile race or two mile race, regardless of their school size.

Awards: 1st and 2nd place team awards for Varsity and Junior High divisions.

Cost: High School boys \$65; High School girls \$65; Junior High boys \$50; Junior High girls \$50 (Or enter all teams \$180) No Junior Varsity fee when you run a Varsity team. Individuals \$10. No Elementary fee when you enter any other division with 5 or more runners.

Payment: Please mail payment to Sapulpa Athletics, 3 South Mission Street, Ok 74066 Questions: For meet inquiries contact Coach Debbie Williams [dwilliams@sapulpaps.org](mailto:dwilliams@sapulpaps.org)

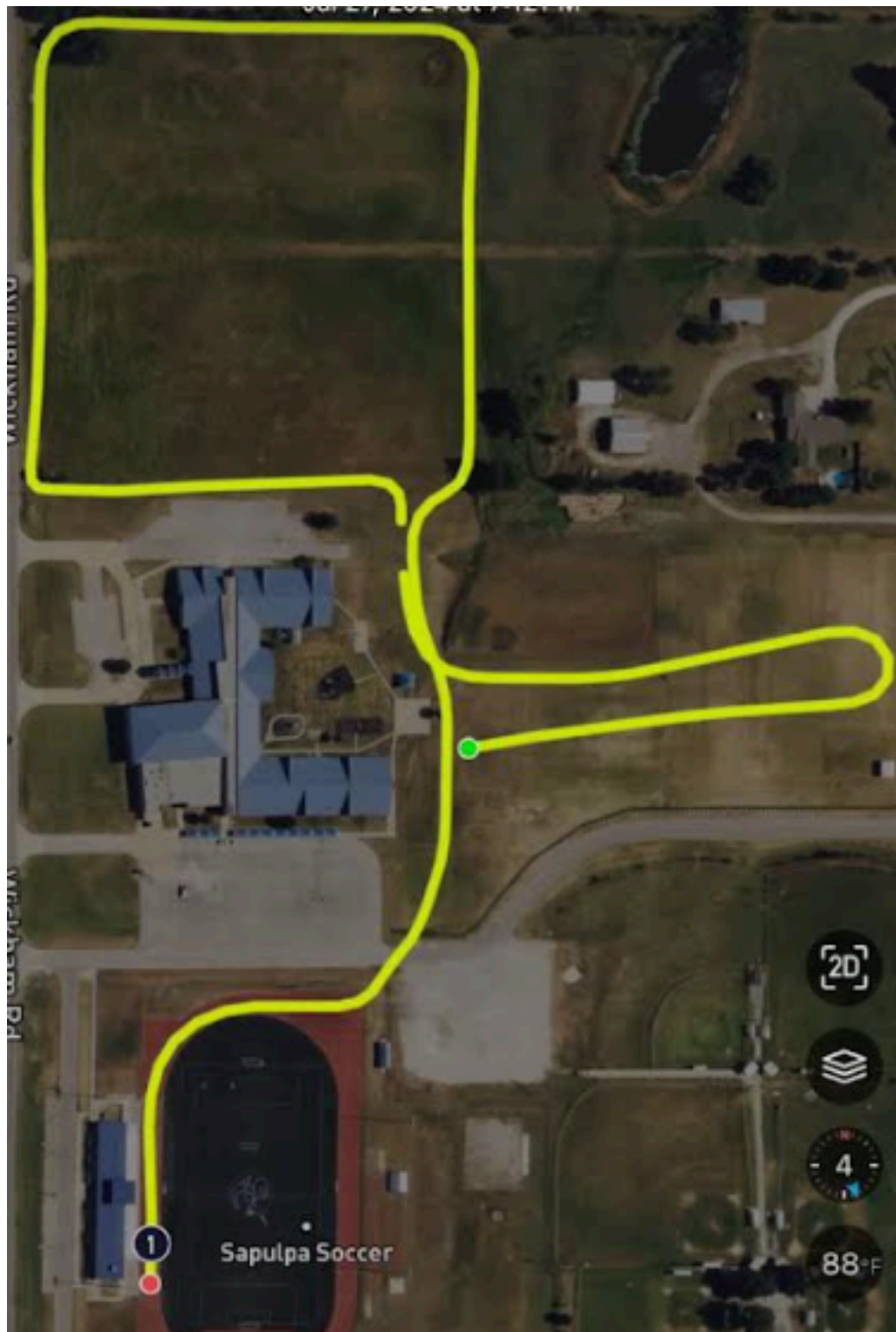
ON-LINE ENTRIES- Coaches must submit all entries on the Entries and Results website:  
[www.entriesandresults.com](http://www.entriesandresults.com). — NO ADDITIONAL ENTRIES AFTER THE DEADLINE.

—ONLINE ENTRIES DEADLINE: August 29th at noon.

Complete ALL the steps on the "Entries Window". Make sure to "VERIFY". TEAMS WILL NOT BE ADDED AT THE MEET. If you need help with your Entries and Results™ account, please email your questions to [jhughes@elginps.net](mailto:jhughes@elginps.net).

[www.entriesandresults.com](http://www.entriesandresults.com) has been loaded with your team roster from last cross country season. All you need to do is edit any changes from last season and add any new athletes for the 2025 season  
MEET TIMING & RESULTS- RFID Chip Timing for the meet is provided by 12:1 Running Timing Services. Live results are available at [www.twelve1running.com](http://www.twelve1running.com).

One mile course



Two mile course map will be provided at the meet

