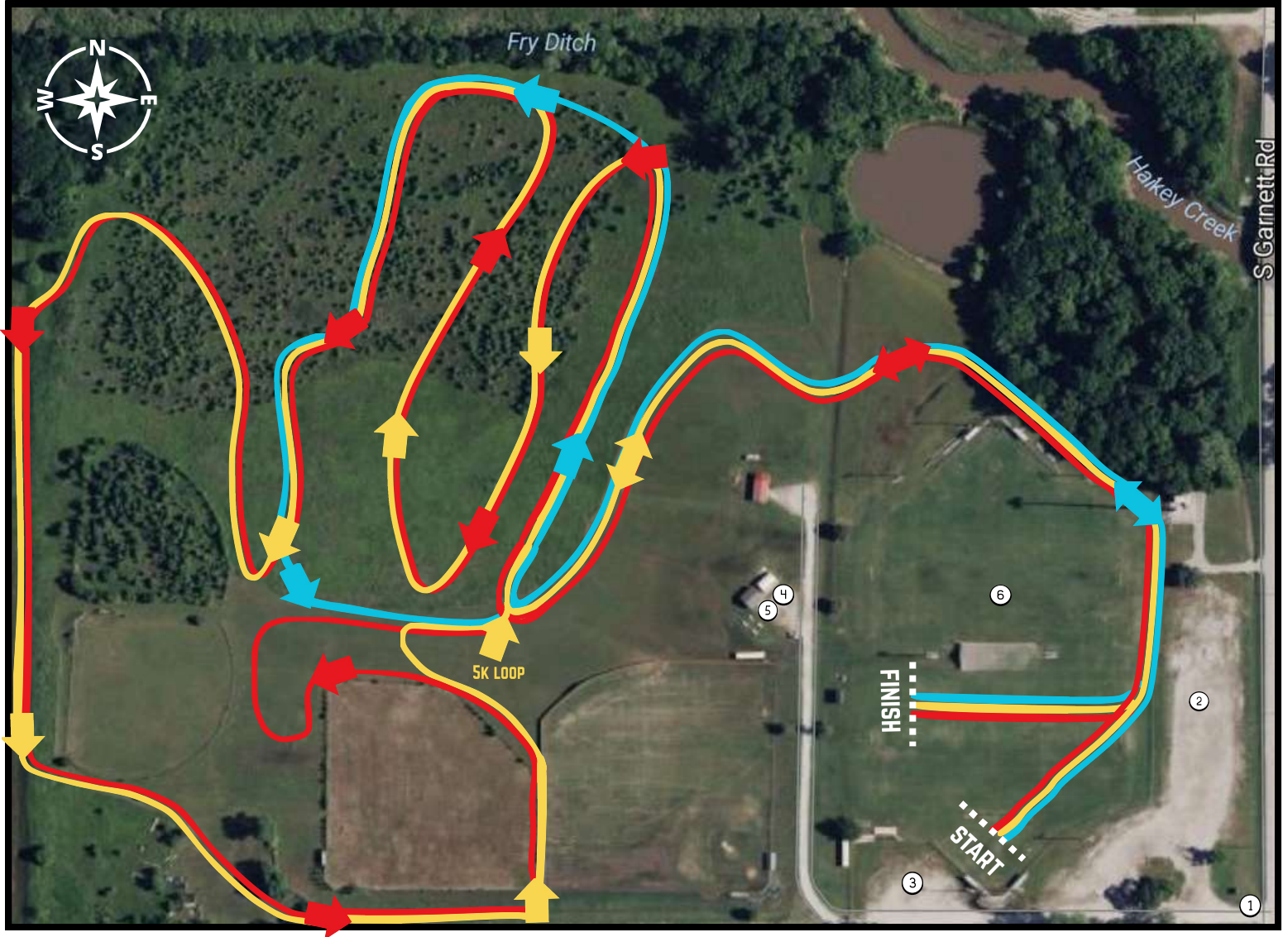


# SUMMIT CROSS COUNTRY

## OPEN INVITATIONAL (4A AND UNDER)

SUMMIT PARK - 13852 S GARNETT RD., BIXBY, OK 74008

SATURDAY, AUGUST 29, 2026



### SCHEDULE

8:00 COACHES MEETING

8:30 ELEMENTARY GIRLS - 1 MILE

9:00 ELEMENTARY BOYS - 1 MILE

9:30 MS GIRLS - 2 MILES


10:00 MS BOYS - 2 MILES

10:30 HS GIRLS - 2 MILES

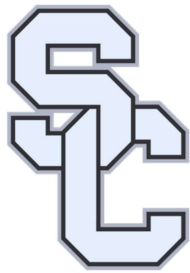
11:00 HS BOYS - 5K

\*TIMES ARE APPROXIMATE. RACES WILL START WHEN THE PRECEDING RACE ENDS.

### MAP INFORMATION

-  1 MILE COURSE
-  2 MILE COURSE
-  5K COURSE

- ① ENTRANCE/EXIT
- ② PARKING
- ③ BUS PARKING
- ④ RESTROOMS
- ⑤ CONCESSIONS
- ⑥ TEAM CAMPS



# SUMMIT CROSS COUNTRY OPEN INVITATIONAL

SATURDAY, AUGUST 29, 2026

## REGISTRATION

ONLINE REGISTRATION ONLY, OPENS AUGUST 15. COACHES MUST SUBMIT ALL ENTRIES ON THE ENTRIES AND RESULTS WEBSITE: [WWW.ENTRIESANDRESULTS.COM](http://WWW.ENTRIESANDRESULTS.COM)

NO ADDITIONAL ENTRIES AFTER THE DEADLINE

ONLINE ENTRIES DEADLINE: AUGUST 28 AT NOON.

COMPLETE ALL THE STEPS ON THE "ENTRIES WINDOW". MAKE SURE TO "VERIFY".

TEAMS WILL NOT BE ADDED AT THE MEET.

IF YOU NEED HELP WITH YOUR ENTRIES AND RESULTS ACCOUNT, PLEASE EMAIL YOUR QUESTIONS TO [JHUGHES@ELGINPS.NET](mailto:JHUGHES@ELGINPS.NET)

## ENTRY FEES

(CASH OR CHECKS PAYABLE TO SUMMIT CHRISTIAN ACADEMY UPON ARRIVAL OR MAIL: JOEL HAAS, 3500 WEST NEW ORLEANS ST, BROKEN ARROW, OK 74012)

MS & HS HIGH SCHOOL - \$85/DIVISION

INDIVIDUAL - \$5 ELEMENTARY, \$15 JH & HS

## AWARDS

ELEM-TOP 20 MEDAL

MS-TOP 15 MEDAL

HS-TOP 10 MEDAL

FIRST PLACE TEAM PLAQUE FOR EACH MS AND HS DIVISION

## MEET DIRECTOR

SCA COACH, JOEL HAAS [JHAAS@SUMMIT.SCHOOL](mailto:JHAAS@SUMMIT.SCHOOL)

## RESULTS

RFID CHIP TIMING FOR THE MEET PROVIDED BY 12:1 RUNNING TIMING SERVICES. LIVE RESULTS ARE AVAILABLE AT [WWW.TWELVE1RUNNING.COM](http://WWW.TWELVE1RUNNING.COM)