



WATONGA
Cross Country Invitational
Saturday, October 10, 2026
256615 E 780 Rd, Watonga, OK



Location: From HWY 33, travel 3 miles north on HWY 8; then go West ½ mile. The course is on the south side of the road. There are no dressing facilities at the site, porta-potties will be available. There will be a \$5 (cash only) per car gate admission. Handicap parking available at the bus entrance.

Runners: Any number of runners may participate from a school and compete for individual medals, but only the top seven will be used in team scoring.

Awards: Medals for the top 30 places in each of the High School and Middle School Divisions.

The Middle School Division is for 8th grade and under. Elementary School Division is for 5th grade and under. We will start the next race as soon as we can when the previous race is completed.

Divisions	Distance	Event Time
High School Boys	5000 Meters	9:00 AM
High School Girls	3200 Meters	
Middle School Boys	3200 Meters	
Middle School Girls	2500 Meters	
4th & 5th Grade Boys & Girls (They all run together.)	1735 Meters	
3rd and below Boys & Girls (They all run together.)	1000 Meters	

Entry Fees: High School team (boys <i>or</i> girls)	\$ 90 per team
Middle School team (boys <i>or</i> girls)	\$ 70 per team
Individual runner (HS or MS)	\$ 15 (less than 5 runners)
Elementary School (boys <i>or</i> girls)	\$ 5 each (No team scoring)

Make checks payable to: Watonga Public Schools

On-line Entry Deadline: Thursday, October 8th @ 7pm.

Entry Procedure: No late team entries accepted. Schools planning to attend must submit their entries on the athletic.net website. Go to Events. Find the meet on the calendar to register. Please email scowan@watonga.k12.ok.us if you are planning to attend.

If you have any questions regarding the meet (athletic.net), please call or text:

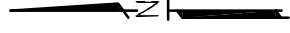
Jim Bob Coleman-Watonga Cross Country Race Manager
 Cell------(580) 478-2039

Sherry Cowan- Watonga Cross Country Coach
 Cell Phone------(580) 819-1585
 School Phone------(580) 623-7361
 Email-----scowan@watonga.k12.ok.us

WATONGA
CROSS COUNTRY

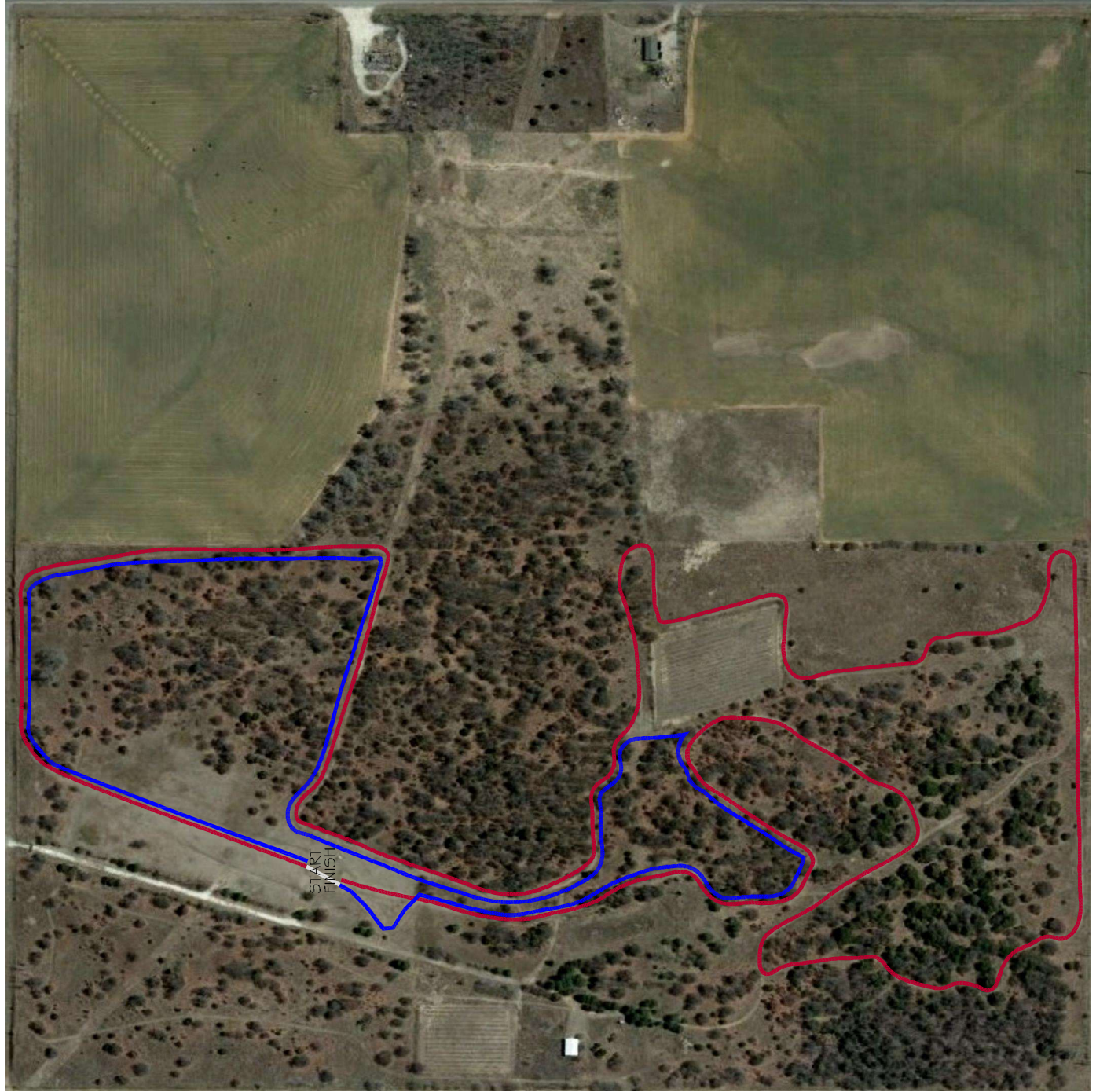


5000 METERS



1ST LAP

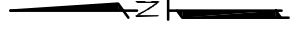
2ND LAP



WATONGA
CROSS COUNTRY



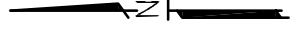
3200 METERS



WATONGA
CROSS COUNTRY



2500 METERS



WATONGA
CROSS COUNTRY



1735 METERS

