

**2016 CHISHOLM REGIONAL TRACK MEET
ORDER OF EVENTS AND APPROXIMATE STARTING TIMES**

3A-2A
April 30, 2016

8:30 Coaches Meeting
9:30 Starting time

FIELD EVENTS

9:30 (2AG-3AG-3AB-2AB) High Jump
9:30 (3AB-2AB-2AG-3AG) Long Jump
9:30 (3AB-2AB-2AG-3AG) Shot Put
9:30 (2AG-3AG-3AB-2AB) Discus
9:30 (2AB-3AB-3AG-2AG) Pole Vault

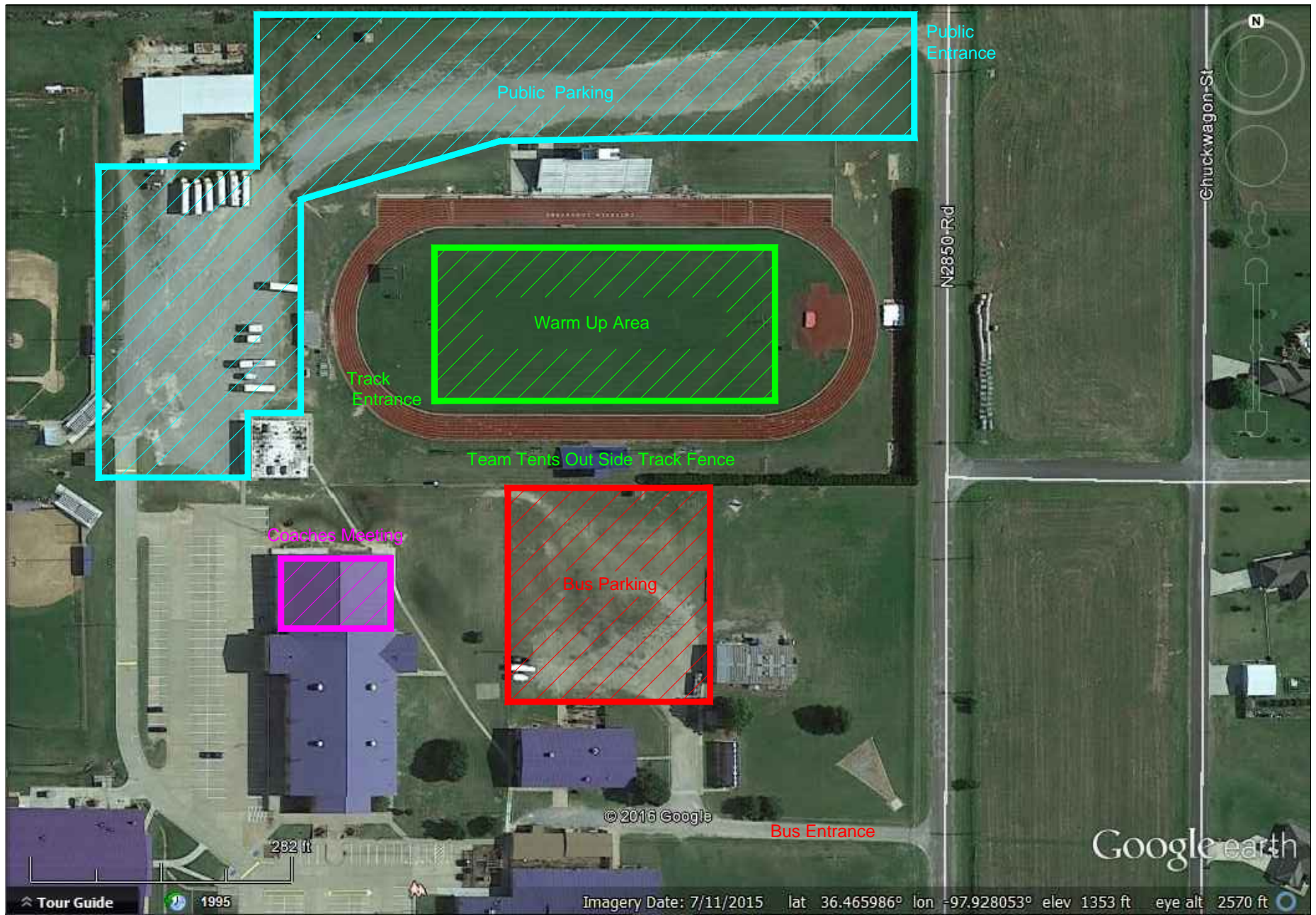
***APPROXIMATE STARTING TIMES
PRELIMINARIES**

9:45	400 Relay - Girls, Boys
10:05	3200 Relay - Girls, Boys (Final)
11:00	100 H. Hurdles - 33" Girls
11:15	110 H. Hurdles - 39" Boys
11:30	100 Dash - Girls, Boys
11:50	3200 Meter Run - Boys (Final)
12:25	800 Relay - Girls, Boys (Final)
1:05	3200 Meter Run - Girls (Final)
1:40	200 Meter Dash - Girls, Boys

<45 minute break>

2:30	400 Meter Relay - Girls, Boys
2:45	800 Meter Run - Girls, Boys
3:10	100 Meter High Hurdles - Girls
3:20	110 Meter High Hurdles - Boys
3:30	100 Meter Dash - Girls, Boys
3:40	400 Meter Dash - Girls, Boys
4:15	300 Meter Low Hurdles - Girls
4:35	300 Meter Int. Hurdles - Boys
4:55	200 Meter Dash - Girls, Boys
5:05	1600 Meter Run - Girls, Boys
5:55	1600 Meter Relay - Girls, Boys

*NOTE: The games committee may make adjustments in the time schedule if circumstances are justified.



EMERGENCY Weather Plan

1. Shane Dent, High School Principal, will be monitoring media coverage and impending inclement weather.
2. Tornado Shelter is located inside our High School gymnasium on the southwest end of the track. In the event of a no notice tornado all people will be directed to the gym and filed into two underground solid cemented rooms that are used as locker rooms. If there is extensive lightning and potential hail the gym and indoor baseball softball facility will be opened to the public as well as all athletes and coaches.
3. In the event of inclement weather we will make use of our gymnasium that is located on the southwest end of the track. Spectators and athletes will be directed to the gym and guided into the safest areas.
4. Shane Dent, High School Principal, will be responsible for gaining access to the storm shelter and indoor facility.
5. For information and direction to possible healthcare professional in event of injury or illness please inquire at the heating benches.