



**2016 IMPORTANT DATES**

Monday, April 11.....Entries Close at 6:00 PM

**ENTRY INFORMATION**

\$60 per team/\$120 for boys and girls  
\$15 for individuals

Schools planning to attend this meet must submit their entries on [enduroentries.com](http://enduroentries.com) by completing Steps 1 - 5. Up to three athletes in all events - You can run more than one relay. You may enter more than 3 athletes if you pay for a "B" team (\$15/person not to exceed \$60).

**ENTRY FEE**

Make check payable to OBU TRACK & FIELD and mail to:  
OBU Track & Field  
Attn: Ford Mastin  
OBU Box 61209  
Shawnee, OK 74804

You may also bring check to the meet and pay at Packet Pickup.

**BUS DROP-OFF/PARKING**

Buses should enter campus in such a way as to be traveling west on University Street. Buses may enter the Event Parking Lot south of the Chance Track via the western entrance for athlete & coach drop off and exit the lot via the east drive. Buses will then be directed to Bus Parking across the street at the Shawnee Regional Airport.

**!! SEVERE WEATHER !!**

In the event weather causes a delay in the start of the meet, buses will be directed to NOT unload and follow the abovementioned parking procedure. Severe weather and starting updates will be made available via the scoreboard display, on twitter @OBU\_Track and by email (as quickly as possible) to the coaches email address associated with each team's EnduroEntries account. If severe weather becomes an issue after buses have unloaded and the meet has begun, visiting coaches and athletes will be directed to OBU's Noble Complex (see map).

**HANDICAP PARKING**

Handicap parking spaces will be made available along University Street next to the Tennis Courts.

**SPECTATOR ADMISSION**

Students and spectators under the age of 18 will be admitted free of charge. Adult ticket prices are \$5.00

**PACKET PICKUP**

Teams must pick up their meet packet in the lobby of OBU's Recreation and Wellness Center located across from the Chance Track Building, southeast of the stadium and north of the tennis courts. Wristbands for coaches will be in the packet and are necessary for entry to the facility. Athletes must have their competition number on their hand before allowed to enter the track area.

### **TEAM CAMP AREA**

Tents should be set up on the south end of the upper fields, east of stadium nearest the sand volleyball courts. No tents will be allowed inside the exterior fence surrounding the Eddie Hurt Jr. Memorial Track Complex.

### **DRESSING/RESTROOMS**

No dressing rooms will be made available for visiting teams. Restrooms are available on the first level of the Track Timing Press Box and in the lobby of the Recreation and Wellness Center.

### **WARM-UP AREA**

The athlete warm-up area will be located outside of the exterior fence, behind the east grandstands and north of the team camp area. Hurdles will be available. Please see the map provided to locate the warm-up and team camp area.

### **COMPETITION AREA**

The competition area is located inside the green perimeter fence surrounding the track. ONLY competing athletes and discus coaches will be allowed in this area.

### **ATHLETE CHECK-IN**

Athletes will be heated approximately 30 minutes before their event. All athletes MUST have their competitor number on their hand before they arrive at the heating/field event area. The Heating Area will be located at the southeast corner of the track. Field Event athletes should check in at the event site.

### **RESULTS**

Live results will be available at [bisonliveresults.com](http://bisonliveresults.com), on the scoreboard following the last heat of each event and posted on the bulletin boards at the Track Timing Press box.

### **AWARDS**

Medals will be awarded to top three individuals and relays in each division. Team Champion and Team Runner-Up trophies for each division will also be awarded. Coaches may pick up awards at the conclusion of the meet at the press box.

### **ATHLETIC TRAINING/FIRST AID**

Teams/schools are responsible for their own athletic training needs. OBU Athletic Trainers will be available *FOR EMERGENCIES ONLY*.

### **MINIMUM MARKS/MEASUREMENTS**

A minimum throw/jump mark will be utilized to speed up the competition. Throws & jumps not beyond the marks listed below will not be measured. Also note the starting heights for the high jump and pole vault.

| EVENT            | MINIMUM/STARTING HEIGHT |
|------------------|-------------------------|
| GIRLS DISCUS     | 90-00                   |
| BOYS DISCUS      | 110-00                  |
| GIRLS SHOT PUT   | 30-00                   |
| BOYS SHOT PUT    | 40-00                   |
| GIRLS LONG JUMP  | 14-00                   |
| BOYS LONG JUMP   | 19-00                   |
| GIRLS HIGH JUMP  | 4-04                    |
| BOYS HIGH JUMP   | 5-04                    |
| GIRLS POLE VAULT | 8-00                    |
| BOYS POLE VAULT  | 10-00                   |

### **CONCESSION STAND**

A concession stand, operated by Chartwells Food Service, will be available at the south end of the track from 9:00AM-5:00PM.

### **COACHES HOSPITALITY**

A hospitality room, located in the Keck Workout Area inside the Chance Track Building, for 3 coaches per school will be available during the meet. Wristbands for coaches will be included in each team's packet and will be necessary for entry. Coffee, juice and doughnuts will be available from 8:30AM until gone. A catered lunch, provided by Robb's Smokehouse, will be served from 11:00AM-1:00PM.

### **COACHES BOXES**

Designated coaching boxes will be available outside of the green fence/competition area for the high jump, pole vault, long jump and shot put. A discus coaching box will be available on the infield, near the discus ring. Only discus coaches will be allowed on the infield and should enter through the gate on the north end nearest the scoreboard.

### **CONTACT**

Ford Mastin - ford.mastin@okbu.edu, (405) 878-2133

Matt Kennedy - matt.kennedy@okbu.edu, (405) 585-5321

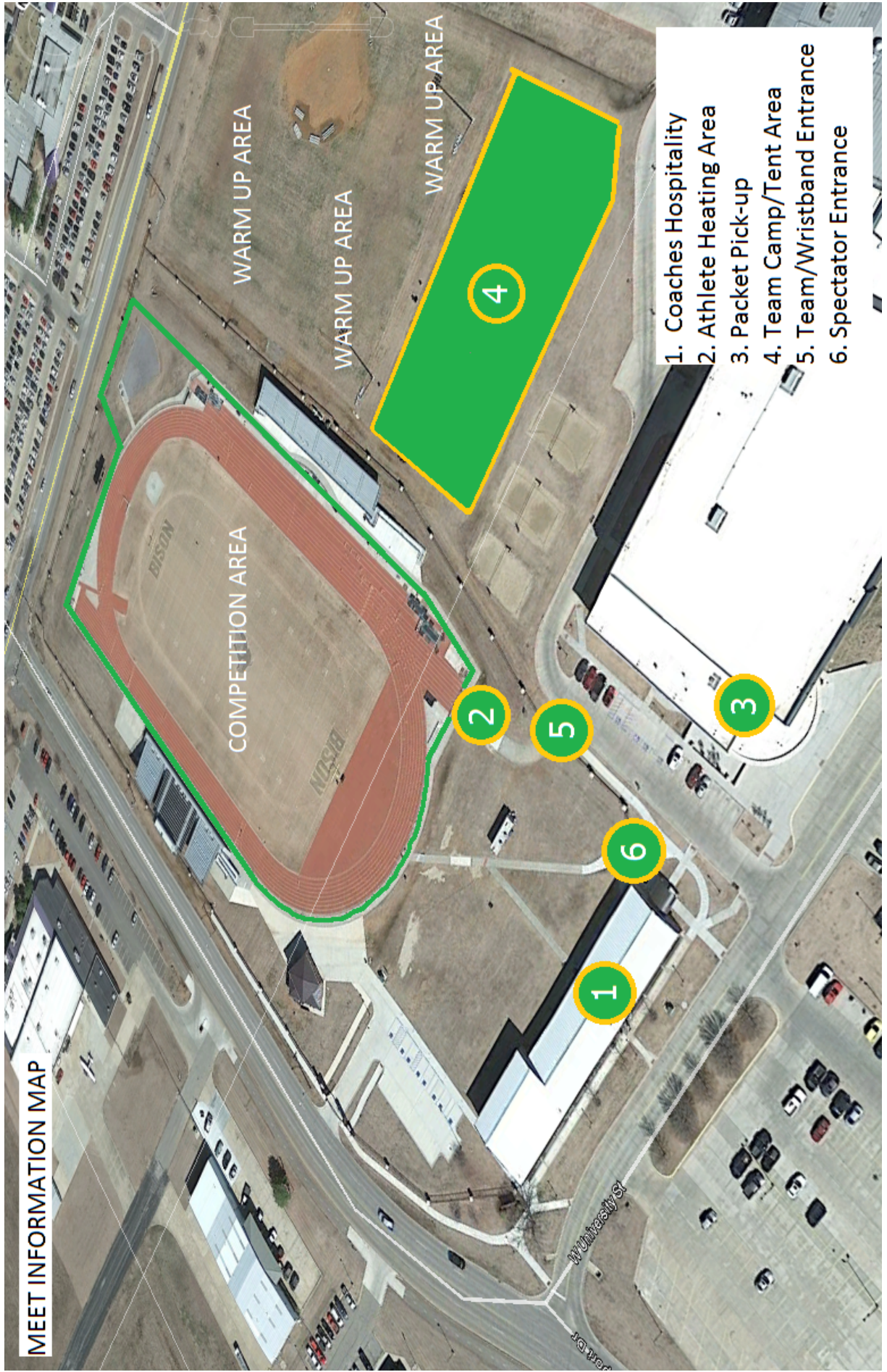
Mark Heard - mark.heard@okbu.edu, (405) 585-5322

**BUS  
PARKING**

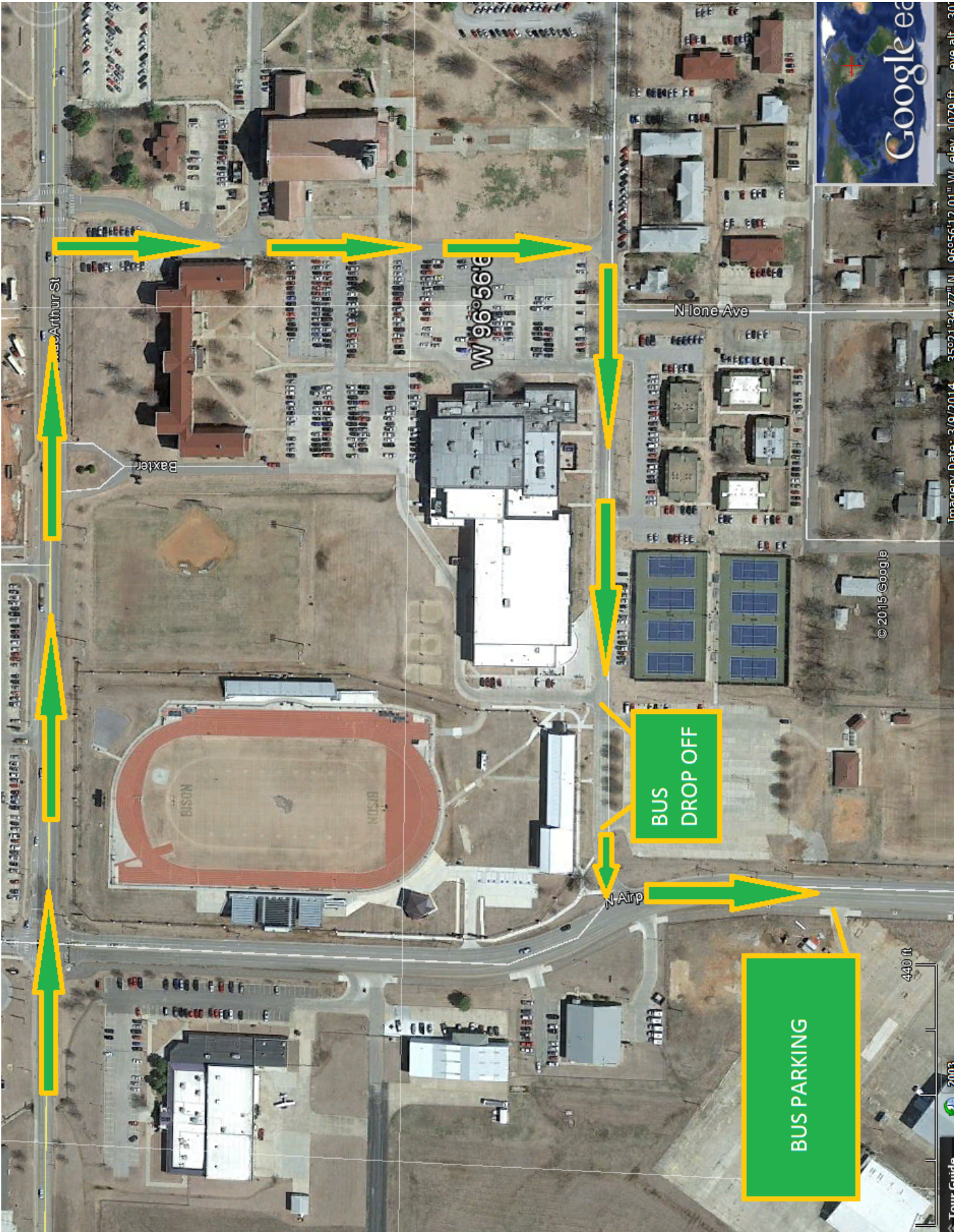
**4/12/16**

**OBU BISON  
INVITATIONAL**

MEET INFORMATION MAP



- 1. Coaches Hospitality
- 2. Athlete Heating Area
- 3. Packet Pick-up
- 4. Team Camp/Tent Area
- 5. Team/Wristband Entrance
- 6. Spectator Entrance



BUS  
DROP OFF

BUS  
PARKING



© 2015 Google

Image Date: 3/07/14 3501124.7271 N 0695612.01 W elev. 1070 ft. 30



! Severe Weather Location



W MacArthur St

Baxter

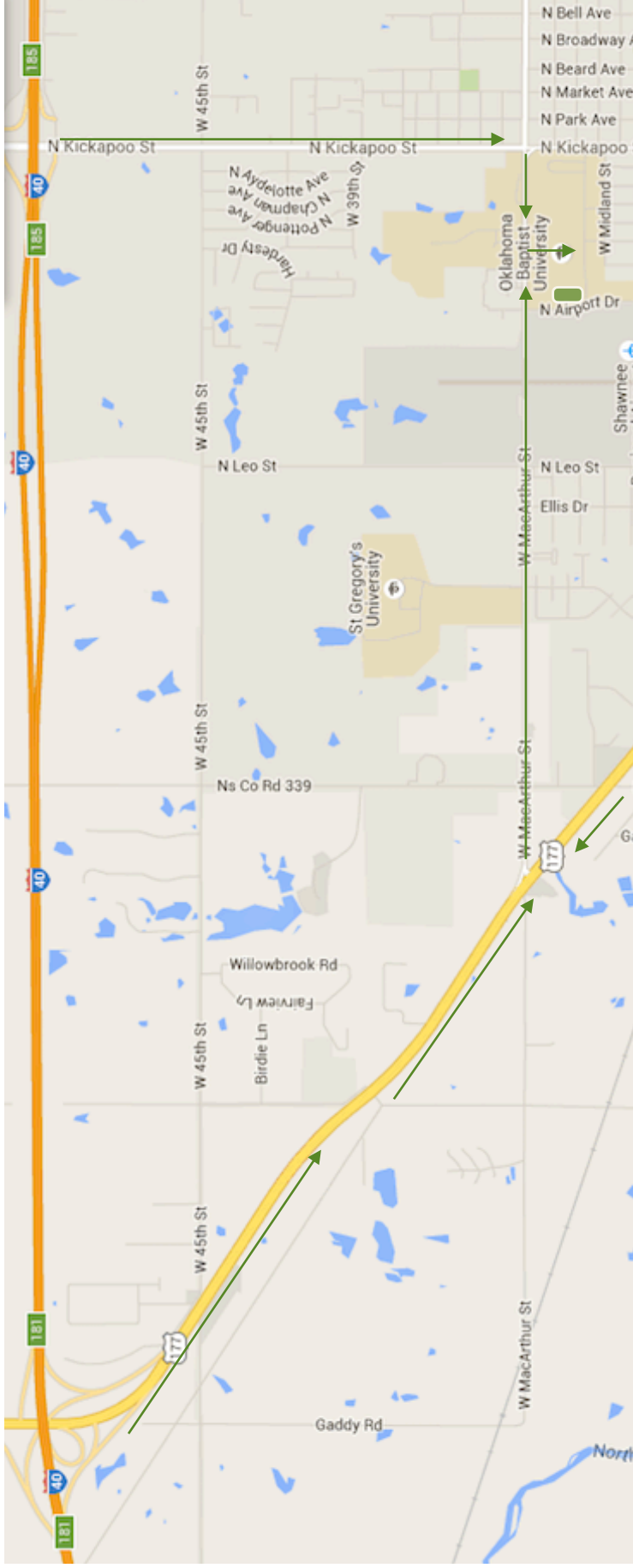
W 96°56'6"

BISON

BISON

N Airport

## SUGGESTED ROUTE MAP



From the West: Exit 181 onto US-177 South to MacArthur St, head East to Campus.

From the South: From US-177 exit to MacArthur St, head East to Campus.

From the East: Exit 185 onto Kickapoo St. head South to MacArthur St, head West to Campus.



## APPROVED SPIKES



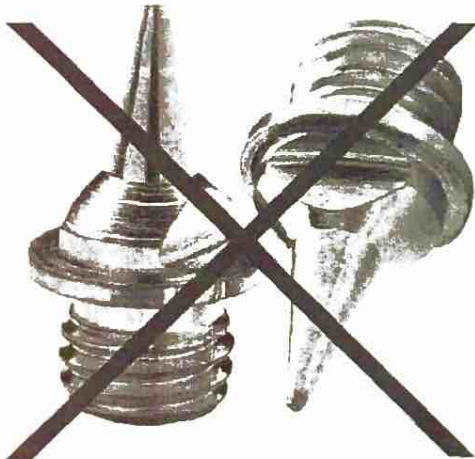
**1/4" PYRAMID SPIKE (CONE)**



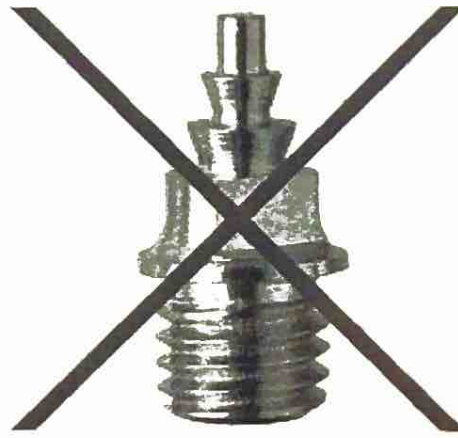
**12MM TORX CYLINDER SPIKE  
(HIGH JUMP ONLY)**

---

## ILLEGAL SPIKES



**NO NEEDLE SPIKES**



**NO CHRISTMAS TREE SPIKES**



**OKLAHOMA BAPTIST UNIVERSITY  
BISON INVITATIONAL  
Shawnee, Ok**

**Attention:** Schools planning to attend this meet must submit their entries on [enduroentries.com](http://enduroentries.com) by completing Steps 1 – 5. The entry deadline for this meet is **MONDAY, April 11th by 6:00pm. This is a Roster Only meet.**

**Date:** Tuesday, April 12, 2016  
Coach's meeting: 8:30am  
Events: 9:00am

**Cost:** \$60 per team/\$120 for boys and girls, \$15 for individuals.

**Entry Fee:** **Make check payable to OBU** and mail to:  
Ford Mastin  
OBU Box 61209  
Shawnee, OK 74804      *\* You can bring check to the meet.*

**Divisions:** Large School - Boys and Girls [5A and 6A combined]  
Small School - Boys and Girls [4A, 3A, and 2A, A combined]

**Awards:** Medals to top three individuals and relays in each division.  
Team Champion and Team Runner-Up trophy for each division.

**Entries:** Three athletes in all events. You can run more than one relay.  
**You can enter more than 3 athletes if you pay for a "B" team.  
(\$15/person not to exceed \$60)**

**Concession:** There will be a concession stand available.

**Lunch:** Provided for all coaches.

**Heats:** Will be determined by previous best performances. All running events will be timed finals, heats against time. F.A.T. timing will be used. Throws and LJ will be three attempts for every competitor, seven will advance to finals.

**Note:** **We will heat athletes approximately 30 minutes before their event.  
All athletes MUST have their competitor number on their hand before  
they arrive at the heating/field event area.**

**Contact:** Ford Mastin - [ford.mastin@okbu.edu](mailto:ford.mastin@okbu.edu), (405) 878-2133  
Matt Kennedy - [matt.kennedy@okbu.edu](mailto:matt.kennedy@okbu.edu), (405) 585-5321  
Mark Heard - [mark.heard@okbu.edu](mailto:mark.heard@okbu.edu), (405) 585-5322



**OKLAHOMA BAPTIST UNIVERSITY  
BISON INVITATIONAL  
Shawnee, Ok**

**Field Events - 9:00AM**

- Shot Put:** Large School (Boys) - Small School (Boys) - Large School (Girls) - Small School (Girls)
- Discus:** Small School (Boys) - Large School (Boys) - Small School (Girls) - Large School (Girls)
- Long Jump:** Small School (Boys) - Large School (Boys) - Large School (Girls) - Small School (Girls)
- High Jump:** Small School (Girls) - Large School (Girls) - Small School (Boys) - Large School (Boys)
- Pole Vault:** Large School & Small School (Boys) - Large School & Small School (Girls)  
\*Points and medals will be awarded separately.

**Running Events - 9:00AM**

Athletes must follow the order of events as a time schedule. Punctuality is required for heating in each event. Girls (G), Boys (B).

**3200 Relay:** Small School (G) - Large School (G) - Small School (B) - Large School (B)

**100m Hurdles:** Small School (G) - Large School (G)

***\*East Side of Track***

**110m Hurdles:** Small School (B) - Large School (B)

***100m/110m Hurdles & 100m dash will be run at the same time!!***

**100m Dash:** Small School (G) - Large School (G)

***\*West Side of Track***

**100m Dash:** Small School (B) - Large School (B)

**800m Relay:** Small School (G) - Large School (G) - Small School (B) - Large School (B)

**3200 Run:** Small School (G) - Large School (G) - Small School (B) - Large School (B)

**400m Relay:** Small School (G) - Large School (G) - Small School (B) - Large School (B)

**400m Dash:** Small School (G) - Large School (G) - Small School (B) - Large School (B)

**300m Hurdles:** Small School (G) - Large School (G) - Small School (B) - Large School (B)

**800m Run:** Small School (G) - Large School (G) - Small School (B) - Large School (B)

**200m Dash:** Small School (G) - Large School (G) - Small School (B) - Large School (B)

**1600m Run:** Small School (G) - Large School (G) - Small School (B) - Large School (B)

**1600m Relay:** Small School (G) - Large School (G) - Small School (B) - Large School (B)